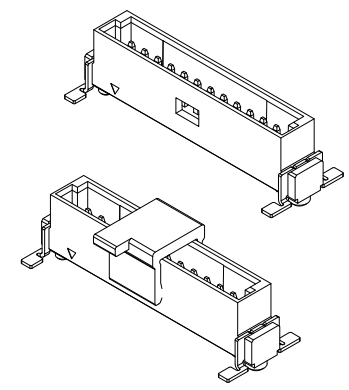
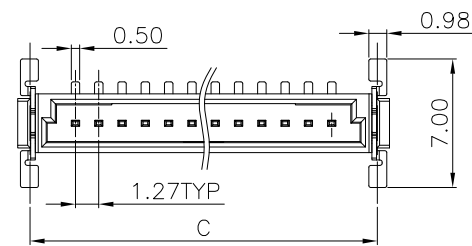


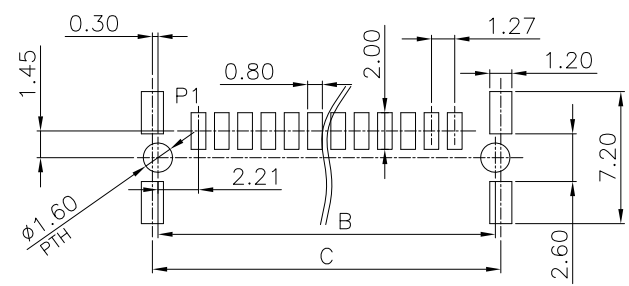
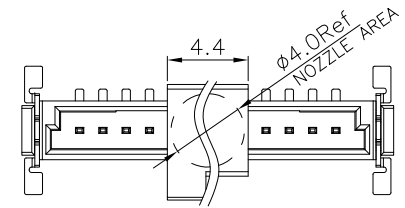
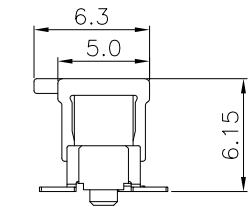
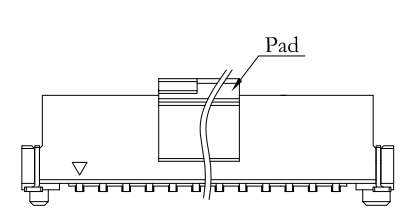
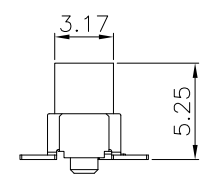
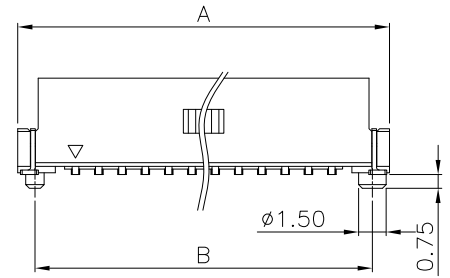
| | | | |
|------|---------------|---------|-------|
| REV. | SPECIFICATION | ECN NO. | APPD. |
| X3 | | | |



Material and Plating:
Housing: LCP, UL94V-0, BLACK.
Signal Contacts: Brass.
Gold plated on Contact Area and 80u" Min Tin Plated on Solder Tail over nickel 50u" Min .
Locks: Brass.
100u" Min Tin Plated over nickel 50u" Min .

Electrical Characteristics:
Current Rating: 1.7A.
Dielectric Withstanding Voltage: AC 500V .
Insulator Resistance: 1000MΩ min.
Contact Resistance: 25mΩ max. at DC 100mA.
Operating Temperature: -55°C~+125°C.

***RoHS Compliant**



P.C. Board Layout (TOP View)
(Tolerance ±0.05)

2321-A 1 X xx M C xx D P 1 T -P

Series _____
Single Row _____
No. of Pin Row _____
M: Male
C: Selective Gold Plated
00: Gold Flash
05: 5μ"
30: 30μ"

P: Plastic Pad
T: Tape&Reel Package
1: Standing Height =5.25mm
P: With Post
N: Without Post
D: SMD Type

| "*" Available Position | | | |
|------------------------|-----------|-------|-------|
| Pos. | Dimension | | |
| | A | B | C |
| 02 | 7.56 | 5.69 | 6.29 |
| 03 | 8.83 | 6.96 | 7.56 |
| 04 | 10.10 | 8.23 | 8.83 |
| 06 | 12.64 | 10.77 | 11.37 |
| 08 | 15.18 | 13.31 | 13.91 |
| 10 | 17.72 | 15.85 | 16.45 |
| * | 20.26 | 18.39 | 18.99 |

| | | | |
|-------------------|--------------------------------|---------------------------------|--|
| Tolerances | Dwg. No. 2321-D0000-003 | Title: | OUPIN OUPIN ELECTRONIC(KUNSHAN) CO., LTD. P/N: 2321-A1XxxMCxxDP1T-P |
| x = ±0.50 | Projection | 2321-A Series | |
| .x = ±0.25 | Unit mm | 1.27mm Pitch SMC Male Connector | |
| .xx = ±0.15 | Scale 1:1 | B To B Single Row SMD Type | |
| | Drawn By SXH 06/14'24 | | SHEET 1/1 Ver.No. X3 |