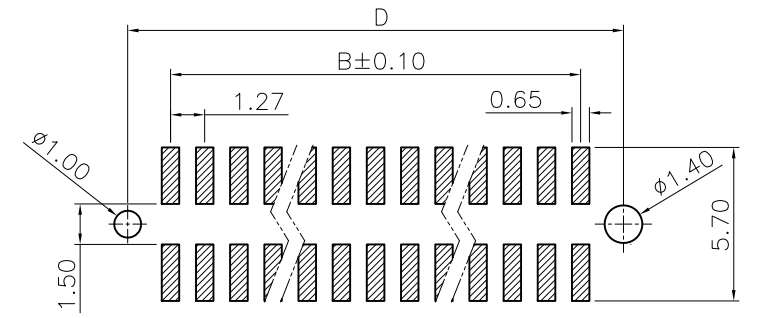
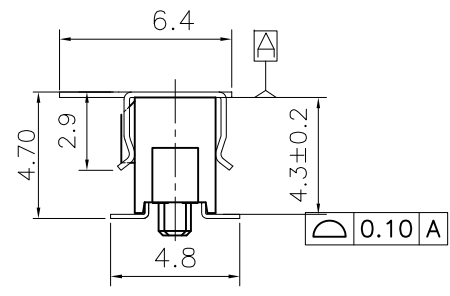
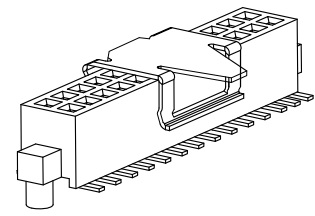
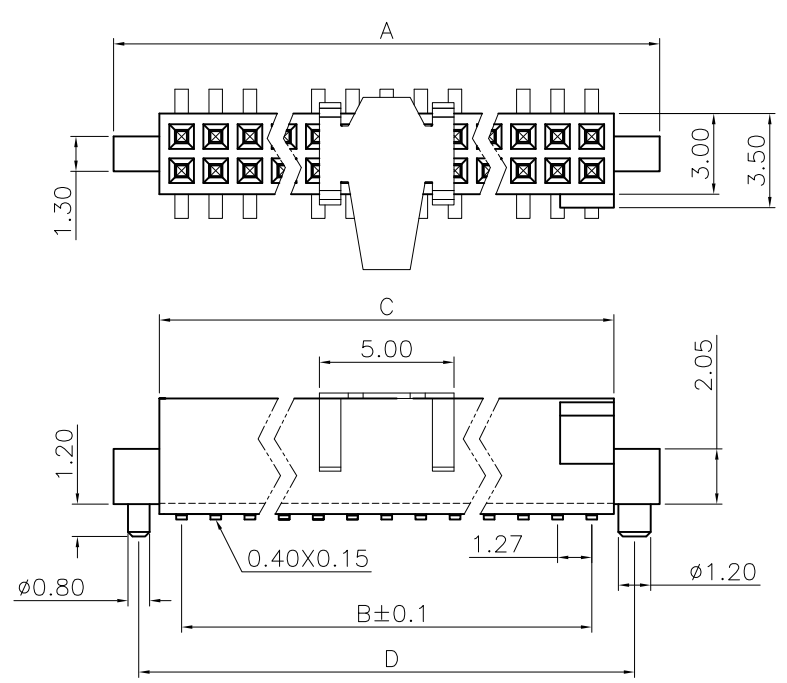


| | | | |
|------|---------------|-----------|-------|
| REV. | SPECIFICATION | ECN NO. | APPD. |
| R7 | | ECN220843 | |



P.C. Board Layout
(Tolerance: ±0.05mm)

Material and Plating:

Housing: LCP, UL94V-0, Black .
 Contacts: Phosphor Bronze.
 Gold Plated on Contact Area and 80u" Min Tin Plated or Gold Flash on Solder Tail over Nickel 50u" Min .

Electrical Characteristics:

Current Rating: 1 AMP.
 Dielectric Withstanding Voltage: AC 500V For 1 minute.
 Insulator Resistance: 1000MΩ min. at DC 500V.
 Contact Resistance: 20mΩ max. at DC 100mA.
 Operating Temperature: -65°C ~ +125°C.

***RoHS Compliant**

Insertion Depth: 1.90mm to 2.90mm

2243- xx C xx D P x -M

Series —
 No. of Position —
 C: Selective
 G: Gold Plated
 00: G/F
 10: 10 μ"
 15: 15 μ"
 30: 30 μ"

— M: Metal Pad
 — U: Tube Package
 — T: Tape & Reel Package
 — P: With Post
 — D: Surface Mount

| | |
|-----------|---------------------------------|
| Position | 14 Thru 100 |
| Dimension | |
| A | 1.27 X No. of Positions/2 +3.78 |
| B | 1.27 X No. of Positions/2 -1.27 |
| C | 1.27 X No. of Positions/2 +0.38 |
| D | 1.27 X No. of Positions/2 +1.91 |

| | | |
|-------------|------------|------------|
| Tolerances | Dwg. No. | 2243D02003 |
| x = ±0.5 | Projection | |
| .x = ±0.25 | Unit | mm |
| .xx = ±0.15 | Scale | 1:1 |
| | Drawn By | CCH8/19/22 |

Title: 2243 Series
 P.C.B. Socket
 1.27mmX1.27mm

OUPIN
 OUPIIN ELECTRONIC(KUNSHAN) CO., LTD.
 P/N: 2243-xxCxxDPx-M
 SHEET 1/1 Ver.No. R7