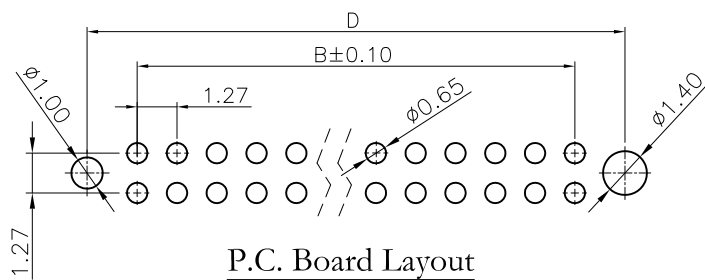
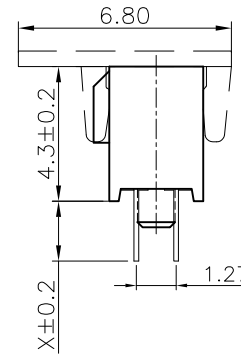
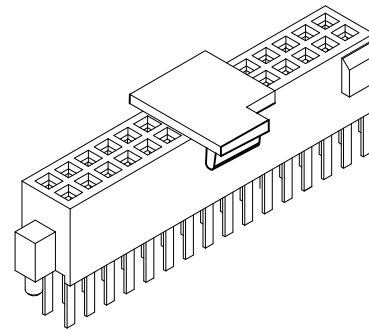
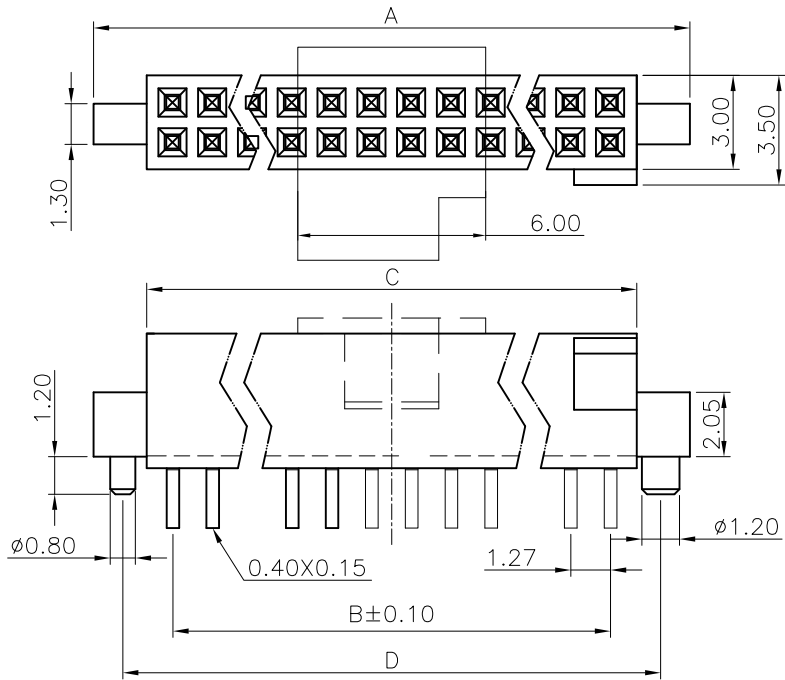


REV.	SPECIFICATION	ECN NO.	APPD.
R5		ECN220843	



**P.C. Board Layout**  
(Tolerance: ±0.05mm)

Series 2243-xx C xx S P x T -x  
 No. of Position  
 C: Selective Gold Plated  
 G: Gold Plated  
 00: G/F  
 10: 10 μ"  
 15: 15 μ"  
 30: 30 μ"  
 Blank: Without Pad  
 P: Plastic Pad  
 T: Tube & Reel Package  
 U: Tube Package  
 x1: 3.05mm  
 x2: 1.91mm  
 x3: 2.30mm  
 P: With Post  
 S: Straight

**Material and Plating:**

**Housing:** LCP UL94V-0, Black.

Contacts: Phosphor Bronze.

Gold Plated on Contact Area and 80u" Min Tin Plated or

Gold Flash on Solder Tail over Nickel 50u" Min .

**Electrical Characteristics:**

**Current Rating:** 1 AMP.

**Dielectric Withstanding Voltage:** AC 500V For 1 minute.

**Insulator Resistance:** 1000MΩ min. at DC 500V.

**Contact Resistance:** 20mΩmax. at DC 100mA.

**Operating Temperature:** -65°C ~ +125°C.

**\*RoHS Compliant**

**Insertion Depth:** 1.90mm to 2.90mm

X	1	2	3
Length	3.05	1.91	2.30
Position	10 Thru 100		
Dimension	10 Thru 100		
A	1.27 X No. of Positions/2+3.78		
B	1.27 X No. of Positions/2-1.27		
C	1.27 X No. of Positions/2+0.38		
D	1.27 X No. of Positions/2+1.91		

Tolerances	Dwg. No.	2243D02006
x = ±0.5	Projection	
.x = ±0.25	Unit	mm
.xx = ±0.15	Scale	1:1
	Drawn By	CCH8/20/22

Title: 2243 Series  
P.C.B. Socket  
1.27mmX1.27mm

OUPIIN ELECTRONIC(KUNSHAN) CO., LTD.			
P/N: 2243-xxCxxSPxT-x			
SHEET	1/1	Ver. No.	R5