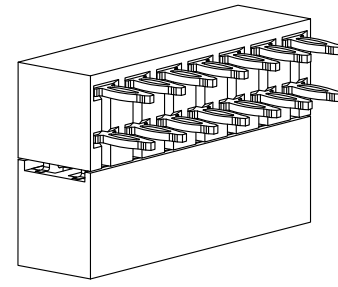
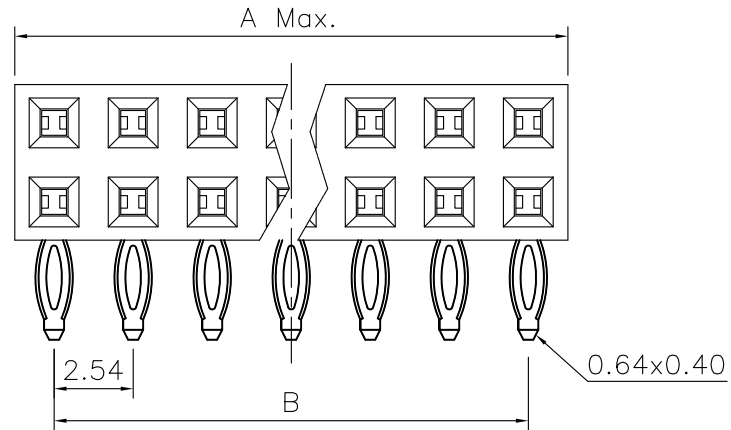


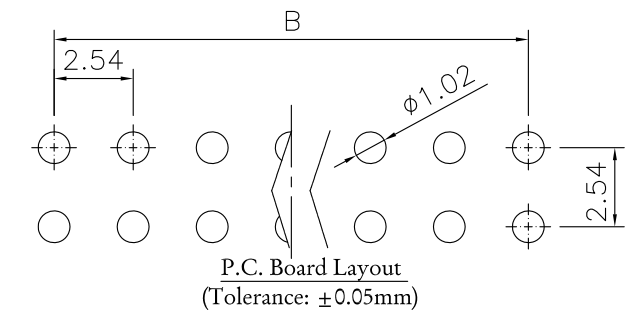
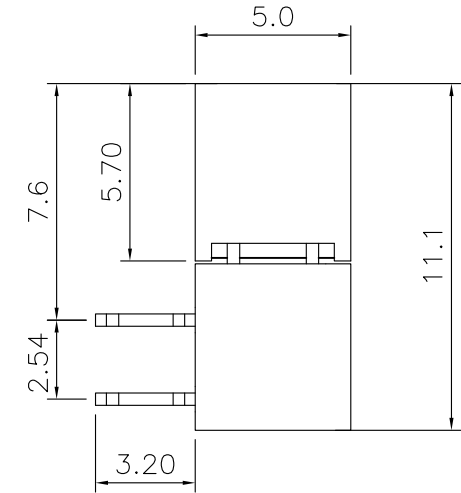
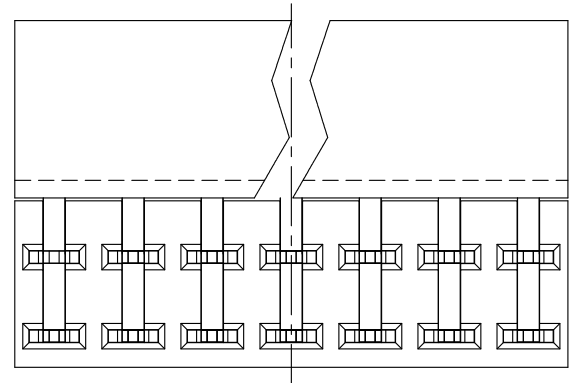
REV.	SPECIFICATION	ECN NO.	APPD.
R4		ECN151236	



Material:
Housing: Thermoplastic Polyester Glass Filled UL94V-0
Contacts: Copper Alloy.

Electrical Characteristics:
Current Rating: 2 AMP.
Dielectric Withstanding Voltage: AC 1000V For 1 minute.
Insulator Resistance: 1000MΩ min. at DC 500V.
Contact Resistance: 20mΩ max. at DC 100mA.
Operating Temperature: -55°C ~ +105°C .

***RoHS Compliant**
Insertion Depth: 2.55mm to 3.80mm.



2042- 2 X xx G xx R P A
Series ————
Double Row ————
No. of Pin Per Row ————
G: Gold Plated ————
T: Tin Plated ————

A: Tray Package
B: Bulk Package
P: Press Fit
R: Right Angle
00: G/F
10: 10 μ"
15: 15 μ"
30: 30 μ"

Position	4 Thru 80
Dimension	
A	2.54 X No. of Position/2
B	2.54 X No. of Position/2 -2.54

Tolerances	Dwg. No.	2042-D0000-005	Title:		 OUPIN ELECTRONIC(KUNSHAN) CO., LTD. P/N: 2042-2XxxGxxRPA SHEET 1/1 Ver.No. R4
x = ±0.5	Projection		2042 Series P.C.B. Socket 2.54mmX2.54mm(0.100"X0.100")		
.x = ±0.25	Unit	mm			
.xx = ±0.15	Drawn By	zbs 02/29'16			