

REV.	SPECIFICATION	ECN NO.	APPD.

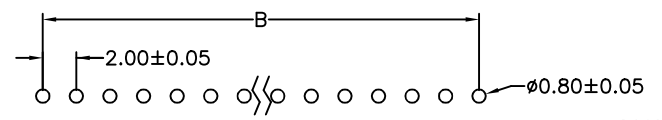
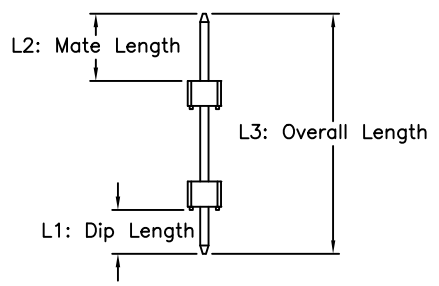
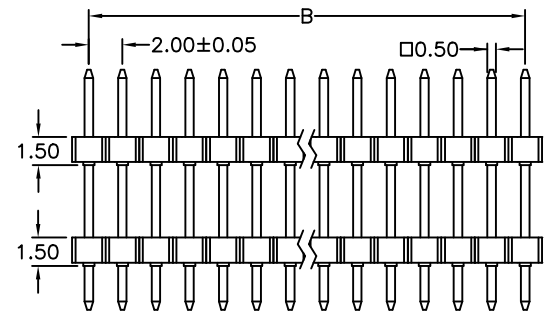
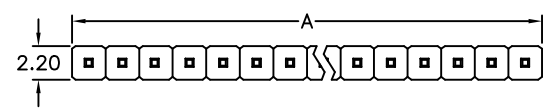
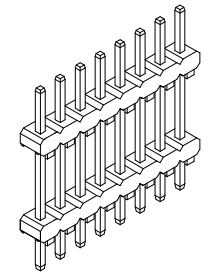
**Material:**

Housing: PA9T, UL94V-0, Black.  
 Contacts: Brass, Gold plated or 80~120u" Matte Tin Plated over Nickel 30~50u".

**Electrical Characteristics:**

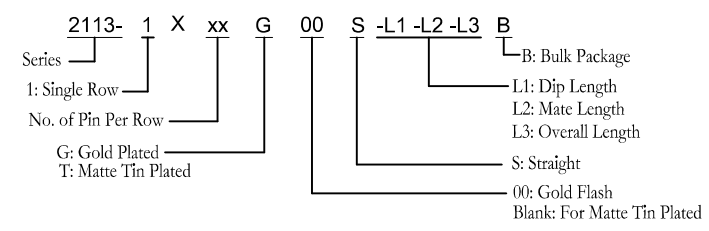
Current Rating: 2 AMP.  
 Dielectric Withstanding Voltage: AC 500V.  
 Insulator Resistance: 1000MΩ min.  
 Contact Resistance: 20mΩ max.  
 Operating Temperature: -40°C~+105°C.

**\*RoHS Compliant**



P.C. Board Layout

ie: 2113-1XxxG00S-2.8-4-14.3B  
 2.8mm Dip Length (increment of 0.1mm)  
 4.0mm Mate Length (increment of 0.1mm)  
 14.3mm Overall Length (increment of 0.1mm)



Dimension					
Positions	A	B	Positions	A	B
02	4.00				
03	6.00	4.00	22	44.00	42.00
04	8.00	6.00	23	46.00	44.00
05	10.00	8.00	24	48.00	46.00
06	12.00	10.00	25	50.00	48.00
07	14.00	12.00	26	52.00	50.00
08	16.00	14.00	27	54.00	52.00
09	18.00	16.00	28	56.00	54.00
10	20.00	18.00	29	58.00	56.00
11	22.00	20.00	30	60.00	58.00
12	24.00	22.00	31	62.00	60.00
13	26.00	24.00	32	64.00	62.00
14	28.00	26.00	33	66.00	64.00
15	30.00	28.00	34	68.00	66.00
16	32.00	30.00	35	70.00	68.00
17	34.00	32.00	36	72.00	70.00
18	36.00	34.00	37	74.00	72.00
19	38.00	36.00	38	76.00	74.00
20	40.00	38.00	39	78.00	76.00
21	42.00	40.00	40	80.00	78.00

<b>Tolerances</b>	<b>Dwg No.</b>	2113D01001
x = ±0.5	<b>Projection</b>	
.x = ±0.25	<b>Unit</b>	mm
.xx = ±0.15	<b>Scale</b>	1:1
	<b>Drawn By</b>	Martin 08/12'21

**Title:** 2113 Series  
 PIN Header 2.0mm  
 Single Row Double Insulator  
 Straight Solder Type

**OUPIIN**  
**OUPIIN ELECTRONIC(KUNSHAN) CO., LTD.**  
**P/N: 2113-1XxxG00S-L1-L2-L3B**

<b>SHEET</b>	1/1	<b>Ver.No.</b>	B2
--------------	-----	----------------	----