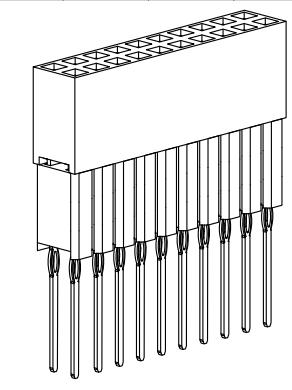
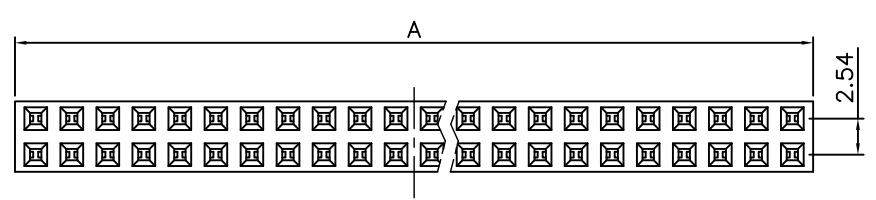


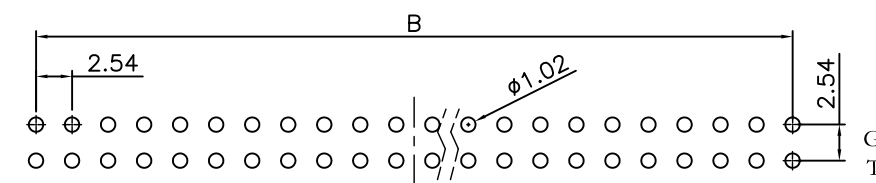
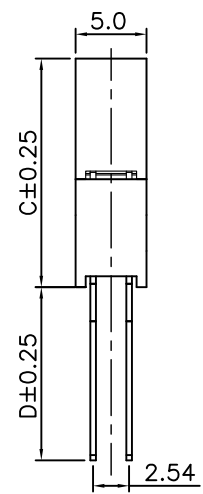
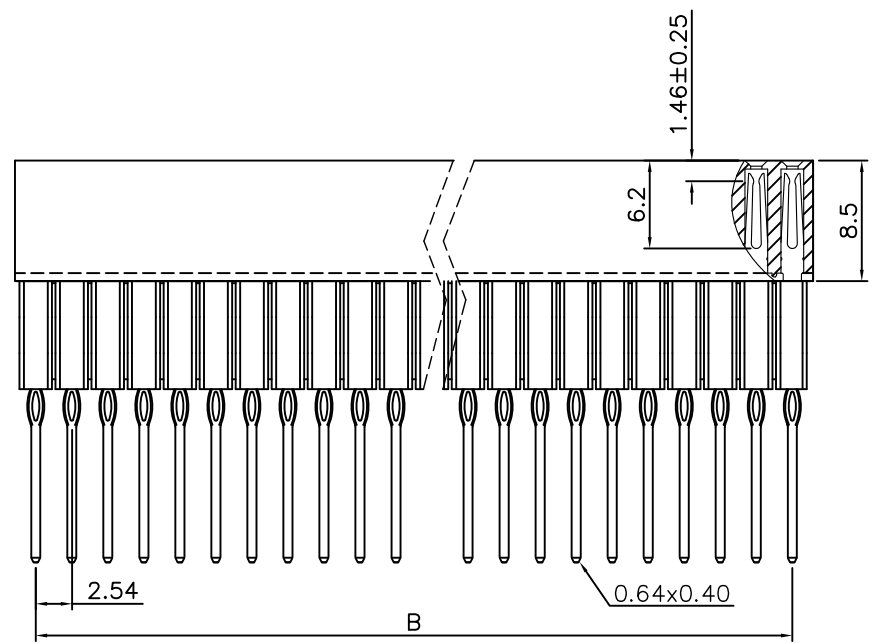
REV.	SPECIFICATION	ECN NO.	APPD.
R7		ECN201004	



Material and Plating:
Housing: PBT, UL94V-0, BLACK
Cover: PBT, UL94V-0, BLACK
Contacts: Brass.
Gold Plated on Contact Area and Gold Flash on Press Fit over Nickel 50u" Min.
Or Tin 80u" Min Plated over Nickel 50u" Min.

Electrical Characteristics:
Current Rating: 2 AMP.
Dielectric Withstanding Voltage: AC 1000V For 1 minute.
Insulator Resistance: 1000MΩmin. at DC 500V.
Contact Resistance: 20mΩmax. at DC 100mA.
Operating Temperature: -55°C ~ +105°C.

***RoHS Compliant**
Insertion Depth: 2.55mm to 5.70mm.



P.C. Board Layout
(Tolerance: ±0.05)

2047- 2 X xx G xx S P x U
Series Double Row No. of Pin Per Row G: Gold Plated T: Tin Plated
U: Tube Package Choices of Code 1~5 P: Press Fit Type
S: Straight 00: G/F 10: 10u" 15: 15u" 30: 30u"

Position	4 Thru 80				
Dimension	2.54 X No. of Positions/2 +0.4				
A	2.54 X No. of Positions/2 -2.54				
C (Code)	1	2	3	4	5
	11.05	13.59	16.13	18.67	11.05
D	3.20	3.20	3.20	3.20	12.20

Tolerances	Dwg. No.	2047-D0000-003		Title:	
x = ±0.5	Projection	⊕ ↙		2047 Series Elevated P.C.B. Socket 2.54mmX2.54mm(0.100"X0.100")	
.x = ±0.25	Unit	mm	Scale		1:1
.xx = ±0.15	Drawn By	WQ 10/8'20			

OUPIN
OUPIN ELECTRONIC(KUNSHAN) CO., LTD.

P/N: 2047-2XxxGxxSPxU

SHEET	1/1	Ver.No.	R7
-------	-----	---------	----