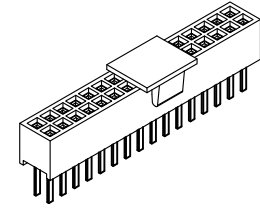
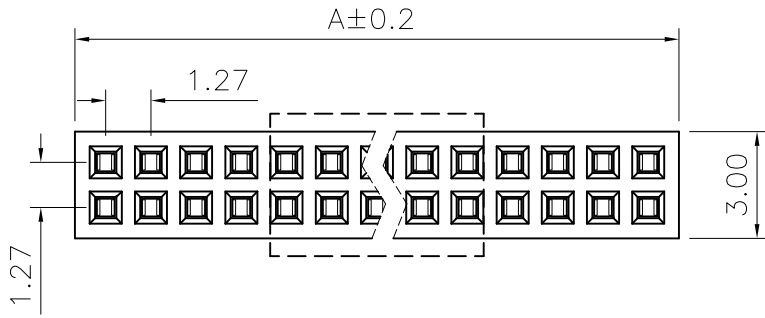


REV.	SPECIFICATION	ECN NO.	APPD.
R5		ECN160446	



**Material and Plating:**

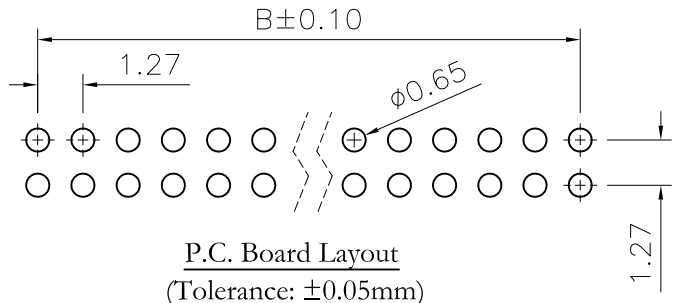
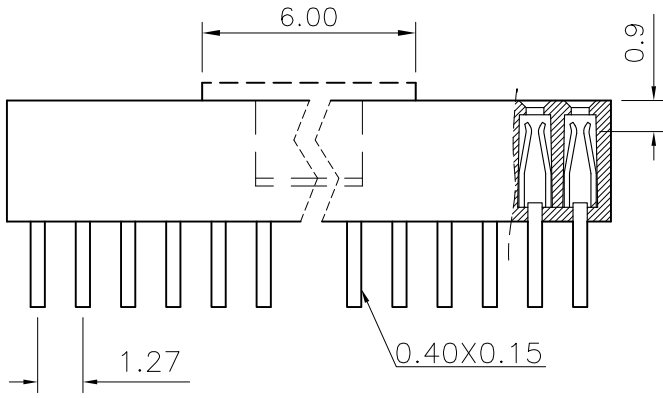
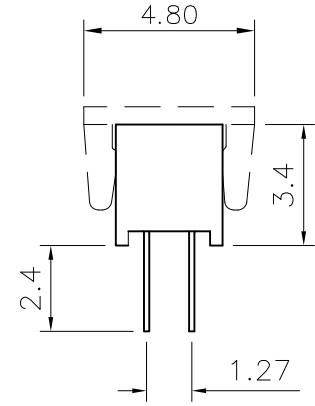
Housing: LCP, 30% Glass Filled, UL94V-0, BLACK.  
 Signal Contacts : Phosphor Bronze.  
 Gold flash plated on Contact Area and 80~160u"  
 Tin Plated on Solder Tail over nickel 50-120u" under plated .

**Electrical Characteristics:**

Current Rating: 1 AMP.  
 Dielectric Withstanding Voltage: AC 500V for 1 minute.  
 Insulator Resistance: 1000MΩ min. at DC 500V.  
 Contact Resistance: 20mΩ max. at DC 100mA.  
 Operating Temperature: -65°C~+125°C.  
 Max Processing Temperature: 230°C for 30~60 seconds.

**\*RoHS Compliant**

Insertion Depth: 2.00mm to 3.00mm



P.C. Board Layout  
(Tolerance: ±0.05mm)

Series 2241- 2 X xx C xx S U -P  
 Double Row  
 No. of Pin Per Row  
 C: Selective Gold Plated  
 G: Gold Plated  
 00: G/F  
 10: 10μ"  
 15: 15μ"  
 30: 30μ"  
 Blank: W/O Pad  
 P: Plastic Pad  
 M: Metal Pad  
 U: Tube Package  
 S: Straight

Position	6 Thru 100
Dimension	
A	1.27 X No. of Positions/2+0.46
B	1.27 X No. of Positions/2-1.27

Tolerances	Dwg. No.	2241D02001
x = ±0.5	Projection	⊕ ◯
.x = ±0.25	Unit	mm
.xx = ±0.15	Scale	1:1
	Drawn By	zbs 04/22'16

Title:  
 2241 Series  
 P.C.B. Socket  
 1.27mmX1.27mm

<b>OUPIN</b>			
OUPIN ELECTRONIC(KUNSHAN) CO., LTD.			
P/N: 2241-2XxxCxxSU-P			
SHEET	1/1	Ver.No.	R5