

REV.	SPECIFICATION	ECN NO.	APPD.
R1		ECN200343	

### Material and Plating:

**Housing:** LCP,UL94V-0 , Black.

**Power Contacts:** High Conductivity Copper .  
30u"Au+Pd/Ni on Contact Area and 80u" Min Tin Plated on Solder Tail over Nickel 50u" Min .

**Signal Contacts :** Phosphor Bronze .  
30u"Au+Pd/Ni on Contact Area and 80u" Min Tin Plated on Solder Tail over Nickel 50u" Min .

**Lock :** Phosphor Bronze .

### Electrical Characteristics:

**Current Rating:** Signal Pin: 2.5 A.

Power Pin: 65A(2oz x 6).

### Dielectric Withstanding Voltage:

Signal Pin DC 1000V For 1 minute.

Power Pin DC 2500V For 1 minute.

### Insulator Resistance:

Signal Pin 500MΩ max.

Power Pin 1000MΩ max.

### Contact Resistance:

Signal Pin 20mΩ max at DC 20mA.

Power Pin 0.7mΩ max at DC 20mA.

### Operating Temperature:

**\*RoHS Compliant**

#### Note 1:

H:High density Power---PCB Mount 5.08mm Pitch.

P:DC Power---PCB Mount 6.35mm Pitch.

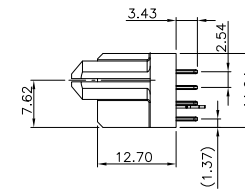
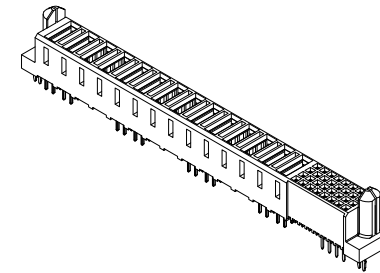
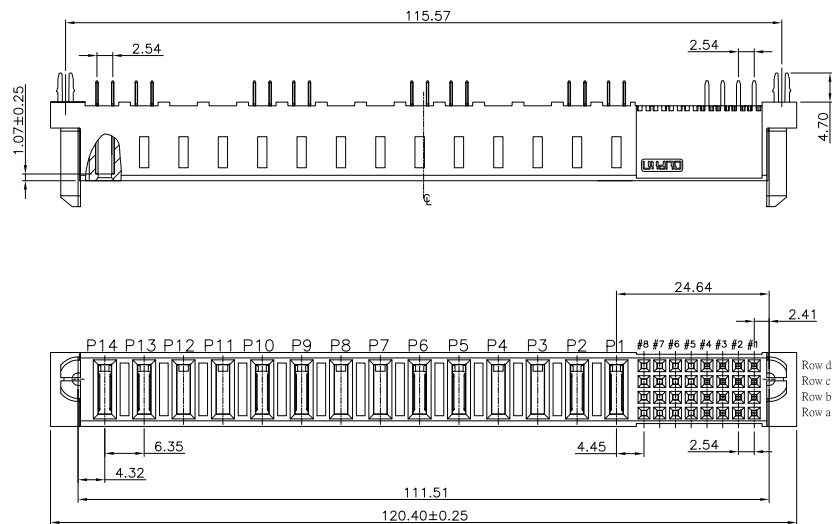
A:AC Power---PCB Mount 7.62mm Pitch.

S:Signal---PCB Mount 2.54mm Pitch.

#### Note 2:

P3,P4,P7,P8,P11,P12:Without Power Contact

D5,C5,B5,A5,D6,C6,B6,A6,D7,C7,B7,A7,D8,C8,B8,A8:Without Signal Contact



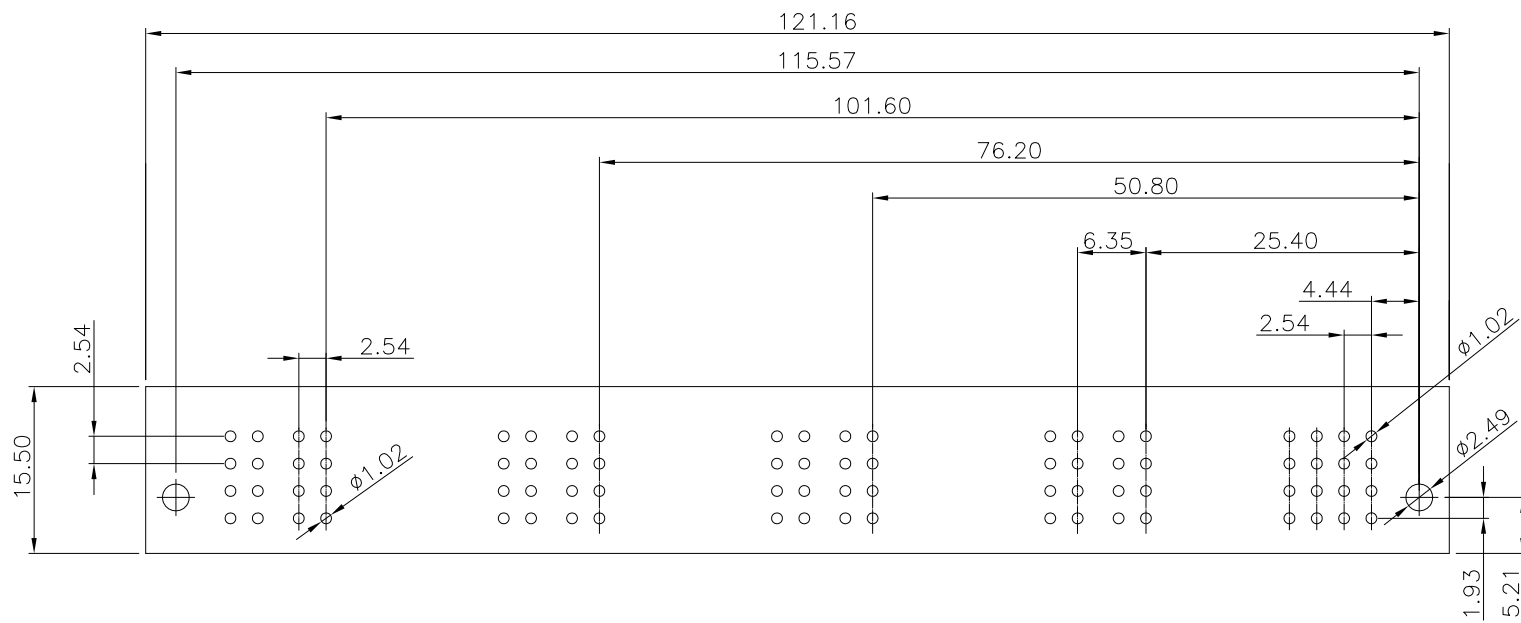
- 9303- 2 P14 S32 CB30 D L A -A012
- Series --- 2:Female Straight
- Blank:Without Contact
- Power Contact: Hxx, Pxx, Axx
- No. of position ---
- Blank: Without Contact
- Signal Contact: S xx
- No. of position ---
- P14: DC Power
- S32: Signal
- CB30: Contact Au+Pd/Ni,Dip Tin  
30: 30 u"
- D: Dip Type
- L: With Lock
- A: Tray Package
- A012: Internal Code

ROWS	POWER														SIGNAL							
	P14	P13	P12	P11	P10	P9	P8	P7	P6	P5	P4	P3	P2	P1	8	7	6	5	4	3	2	1
D																						
C	FS	FS			FS	FS			FS	FS			FS	FS								
B																						
A																						

POWER CONTACT TO THE TOP DISTANCE 1.07mm, THE MATING LENGTH 5.14mm	FS
POWER CONTACT TO THE TOP DISTANCE 2.34mm, THE MATING LENGTH 3.87mm	FM
SIGNAL CONTACT 3.43 SOLDER TAIL, PD/NI	L

Tolerances	Dwg No.	9303-D0000-055	Title:		 <b>OUPIIN ELECTRONIC(KUNSHAN) CO., LTD.</b> P/N: 9303-2P14S32CB30DLA-A012
x. = ±0.50	Projection		9303 Series		
.x = ±0.25	Unit	mm	Scale	1:1	
.xx = ±0.15	Drawn By	WJ 10/10'19	Female Straight Dip Type		
					SHEET
					1/2
					Ver.No.
					R1

REV.	SPECIFICATION	ECN NO.	APPD.
R1		ECN200343	



**P.C.Board Layout**  
(Tolerance:±0.05)

<b>Tolerances</b> x. = ±0.50 .x = ±0.25 .xx = ±0.15	<b>Dwg No.</b> 9303-D0000-055		<b>Title:</b>		 <b>OUPIIN ELECTRONIC(KUNSHAN) CO., LTD.</b>
	<b>Projection</b> 		9303 Series		
	<b>Unit</b> mm	<b>Scale</b> 1:1	Female Straight Dip Type		<b>SHEET</b> 2/2
	<b>Drawn By</b> WJ 04/06'20				<b>Ver.No.</b> R1