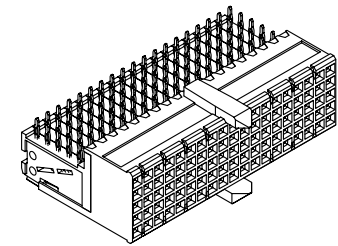
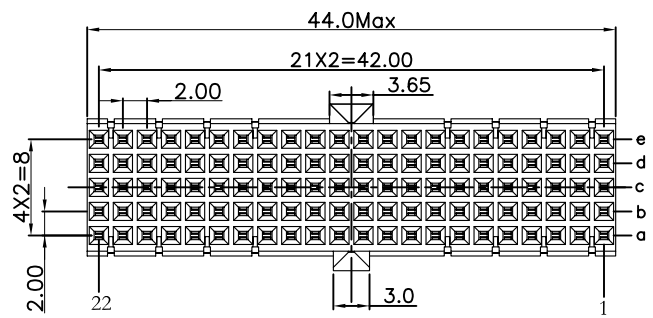


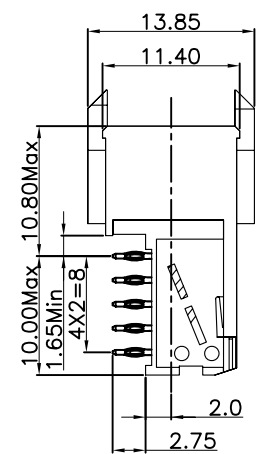
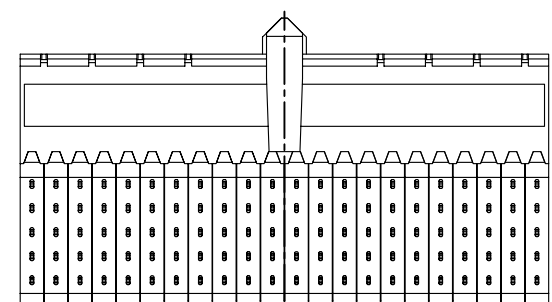
REV.	SPECIFICATION	ECN NO.	APPD.
R5		ECN121230	



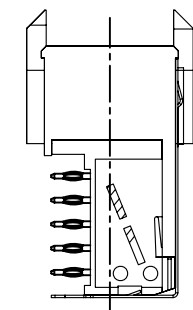
**Material:**  
Housing: Thermoplastic Polyester Glass Filled UL94V-0.  
Contacts: Copper Alloy

**Electrical Characteristics:**  
Current Rating: 1 AMP.  
Dielectric Withstanding Voltage: AC 750V For 1 minute.  
Insulator Resistance: 10000MΩ min. at DC 500V.  
Contact Resistance: 20mΩ max. at DC 100mA.  
Operating Temperature: -55°C ~ +125°C .

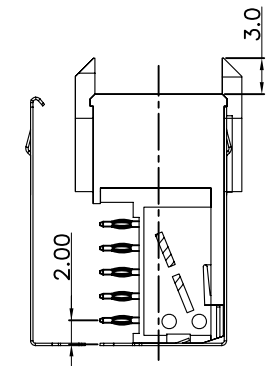
**\*RoHS Compliant**



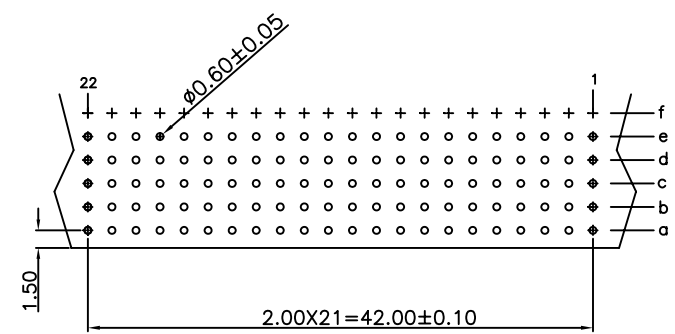
None Shielded



With Top Body Shielded



With Top Body Shielded and Bottom Shielded



P.C. Board Layout  
(Top View)

9111- 7 2 AB 110 1 Cxx U

Series: 9111-  
7Row: 7  
2: Female  
AB: Type AB  
Position: 1  
Cxx: Dip Tin Contact Gold  
U: Tube Package

1: None Shielded  
2: Top Body Shielded  
3: Top Body Shielded and Bottom Shielded (Package Separately)

10: 10u"  
30: 30u"  
CB30: Dip Tin  
Contact Au+Pd/Ni  
30: 30u"

<b>Tolerances</b>	<b>Dwg. No.</b>	9111D72011	<b>Title:</b>		 <b>OUPIIN ELECTRONIC(KUNSHAN) CO., LTD.</b> P/N: 9111-72AB110xCxxU <b>SHEET</b> 1/1 <b>Ver.No.</b> R5			
x = ±0.5	<b>Projection</b>		9111 Series					
.x = ±0.25	<b>Unit</b> mm	<b>Scale</b> 1:1	Hard Metric Connector					
.xx = ±0.15	<b>Drawn By</b>	CQ 12/14'12	Female Right Angle Type AB-22					