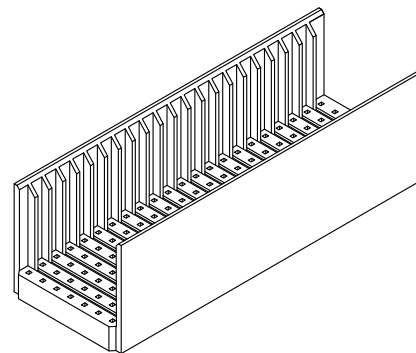
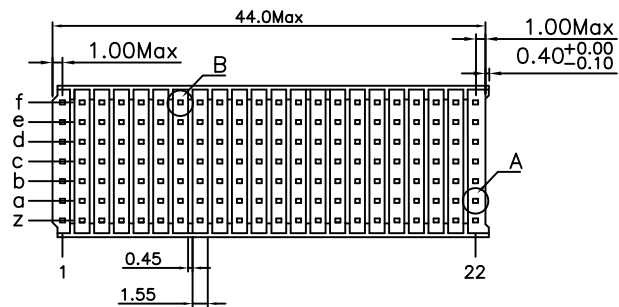
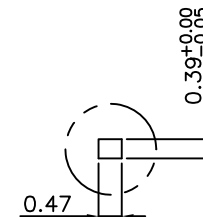
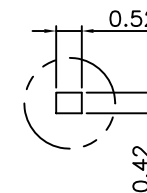
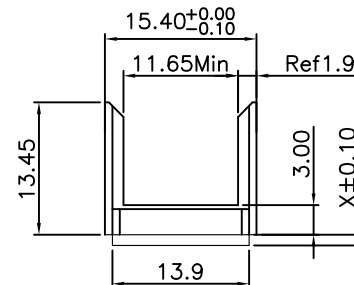
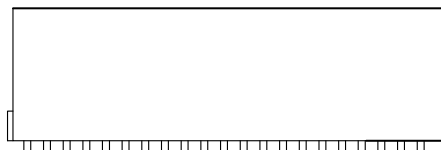


REV.	SPECIFICATION	ECN NO.	APPD.
R1			



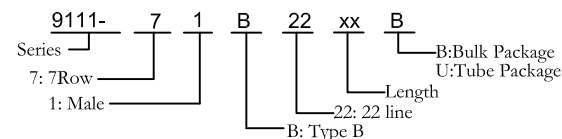
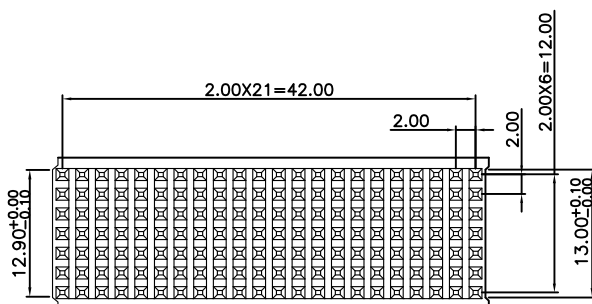
Material:
Housing: Thermoplastic Polyester Glass Filled UL94V-0
Electrical Characteristics:
Operating Temperature: -55°C ~ +125°C .
***RoHS Compliant**



Detail A

Detail B

(4, 5, 6, 7, 23, 24, 25P)



X	Length
00	0.00
01	0.90
02	1.10
03	1.30
04	1.50
05	1.70
06	1.90
07	2.20
08	3.00

Tolerances	Drawn No.	9111D71166
x = ±0.5	Projection	
.x = ±0.25	Unit	mm
.xx = ±0.15	Scale	1:1
	Drawn By	Emp 05/06/10'

Title:
9111 Series
2.00 Hard Metric
connectors shrouds
type B Housing



OUPIN ELECTRONIC(KUNSHAN) CO., LTD.

P/N: 9111-71B22xxB

SHEET	1/1	Ver.No.	R1
-------	-----	---------	----