

REV.	SPECIFICATION	ECN NO.	APPD.
R3		ECN221122	

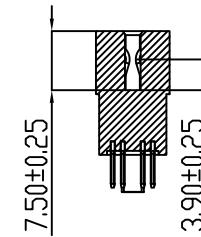
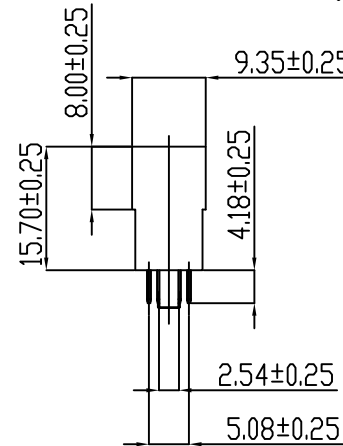
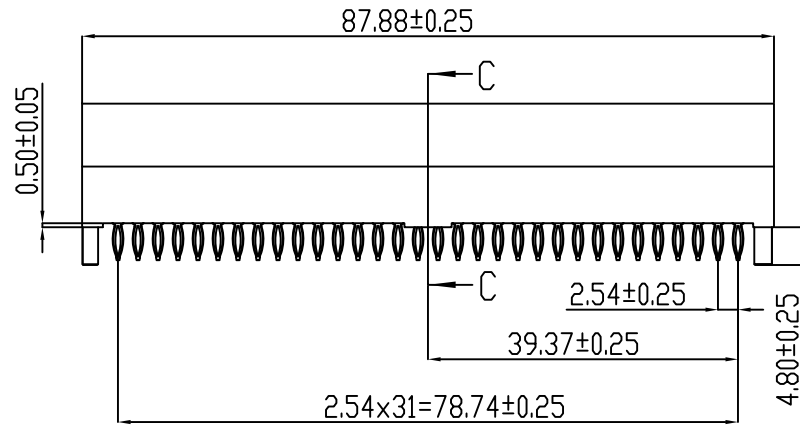
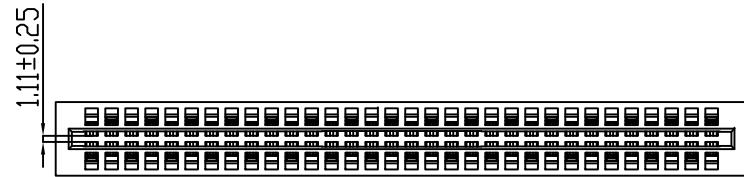
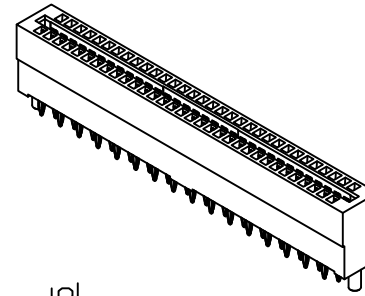
Material and Plating:

Housing: High Temperature Plastic UL94V-0
 Contacts: High Conductivity Copper .
 Gold Plated on Contact Area and 80u"min Tin Plated or
 Gold Flash Plated on solder tail or Press Fit over 50u"min Nickel .
 Or Au+Pd/Ni on Contact Area and 80u"min Tin on solder tail
 or Press Fit over 50u"min Nickel.

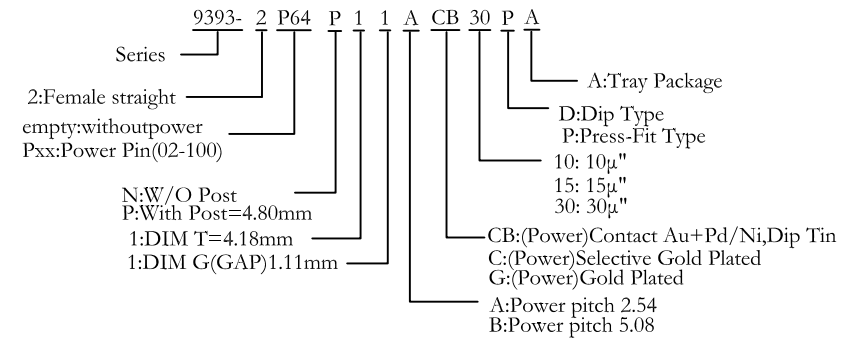
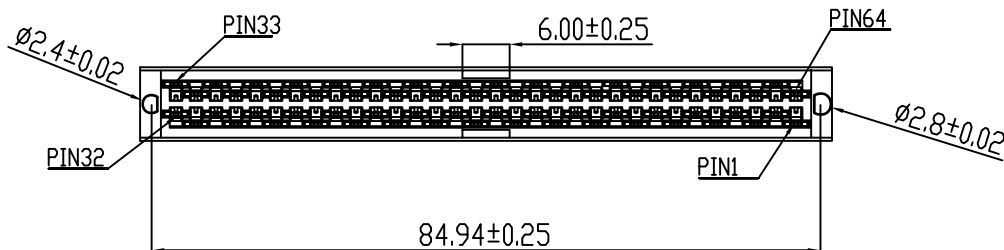
Electrical Characteristics:

Current Rating: 12.5 A(UL).
 Dielectric Withstanding Voltage: DC 1000V For 1 minute.
 Insulator Resistance: 5000MΩ min. at DC 500V.
 Contact Resistance: 10mΩ max.
 Operating Temperature: -5°C ~+105°C .

***RoHS Compliant**



Section C-C

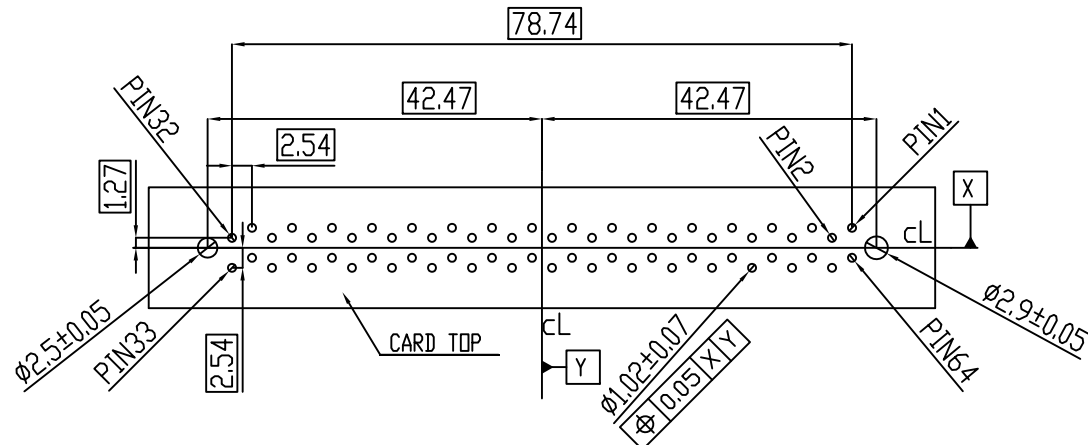


Tolerances	DWG. No.	9393-D0000-004		Title:	
x=±0.50	Projection	⊕ ⊖		9393 Series LVDC POWER EDGE CONNECTOR	
.x=±0.25	Unit	mm	Scale		1:1
.xx=±0.15	Drawn By	ZY 11/14'22			

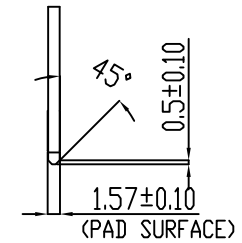
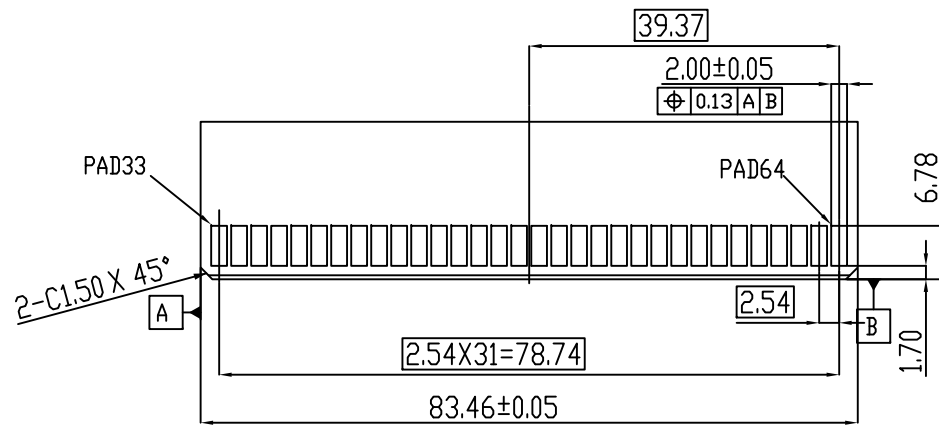
©(T)

OUPIN			
OUPIN ELECTRONIC(KUNSHAN) CO., LTD.			
P/N: 9393-2P64P11ACB30PA			
SHEET	1/2	Ver.No.	R3

REV.	SPECIFICATION	ECN NO.	APPD.
R3		ECN221122	



P.C. Board Layout
 PCB Thickness: 3.18mm
 Tolerances: ± 0.05 mm



Tolerances	DWG. No.	9393-D0000-004	Title:	
x= ± 0.50	Projection	\oplus \triangleleft	9393 Series	
.x= ± 0.25	Unit	mm	LVDC POWER	
.xx= ± 0.15	Scale	1:1	EDGE CONNECTOR	
	Drawn By	ZY 11/14'22	\odot (T)	



OUPIIN ELECTRONIC(KUNSHAN) CO., LTD.			
P/N: 9393-2P64P11ACB30PA			
SHEET	2/2	Ver.No.	R3