

REV.	SPECIFICATION	ECN NO.	APPD.
R4		ECN220326	

Material and Plating:

Housing: LCP, UL94V-0, BLACK.

Power Contacts: High Conductivity Copper.

5u" gold plated on Contact Area and 80u" min Tin Plated on Solder Tail over nickel 50u" min.

Electrical Characteristics:

Current Rating: UL Certified 12.5A, UL/CSA certified 7A.

Dielectric Withstanding Voltage: AC 1000V For 1 minute.

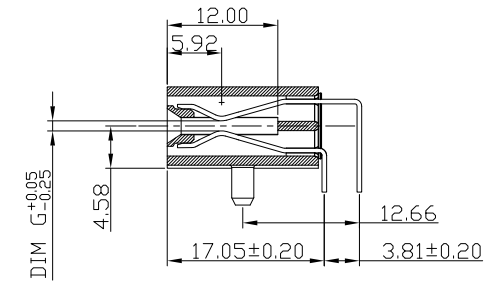
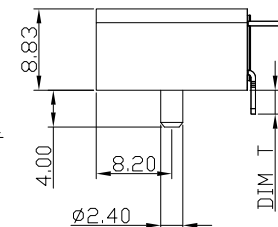
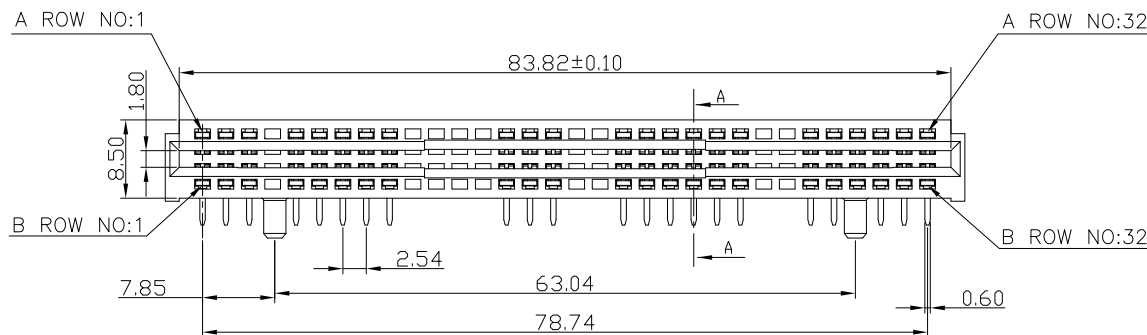
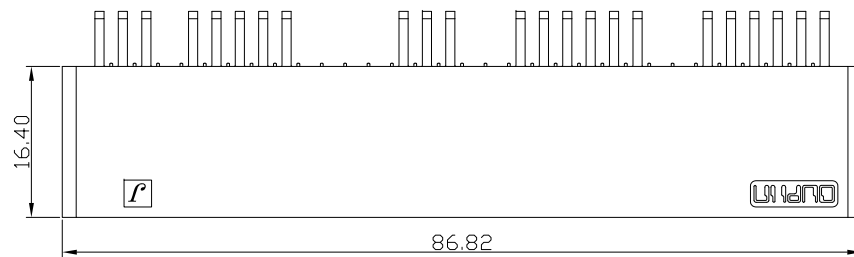
Insulator Resistance: 5000MΩ min. at DC 500V.

Contact Resistance: 2.5mΩ max. at DC 100mA.

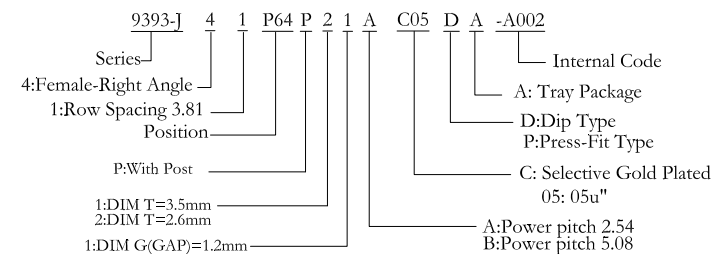
Operating Temperature: -55°C ~ +105°C.


*RoHS Compliant

*Note: A,B Row P4,P10,P11,P12,P13,P17,P18,P25,P26 Without Contact

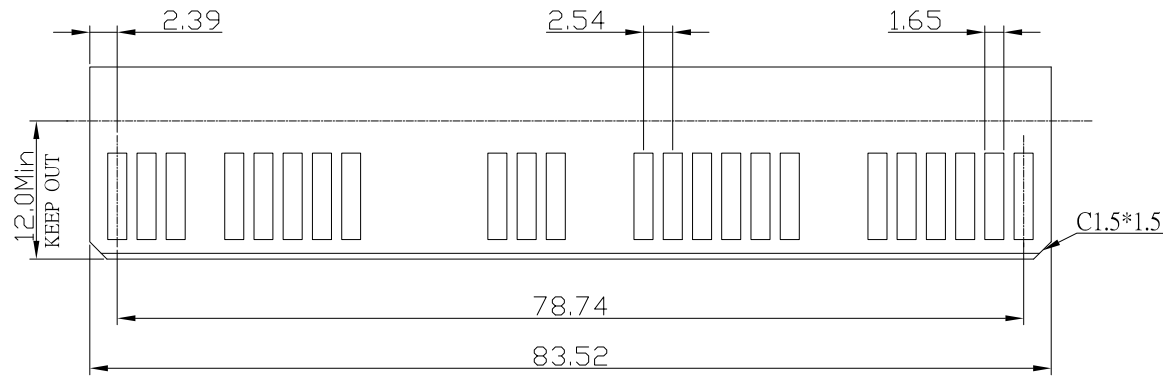


SECTION A-A

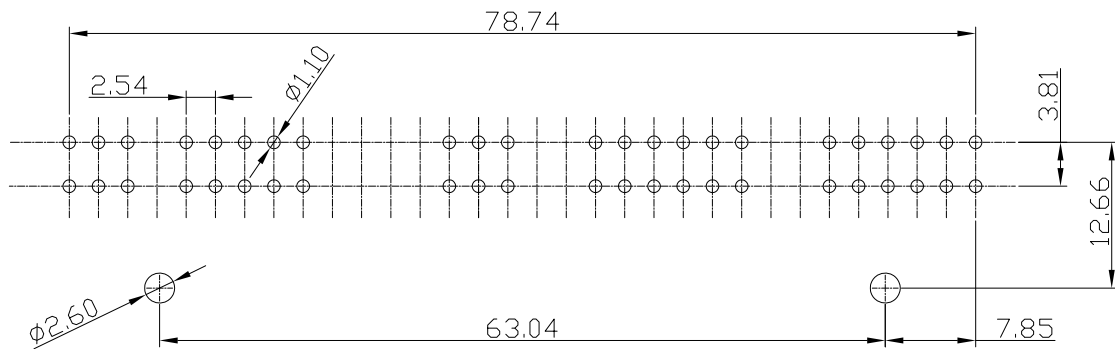


Tolerances	Dwg. No.	9393-D0000-037	Title:		 OUPIN ELECTRONIC(KUNSHAN) CO., LTD. P/N: 9393-J41P64P21AC05DA-A002			
x = ±0.5	Projection		9393-J Series					
.x = ±0.25	Unit	mm	Scale	1:1	Power Edge Connector		SHEET	1/2
.xx = ±0.15	Drawn By	XS 03/16'22			Ver. No.	R4		

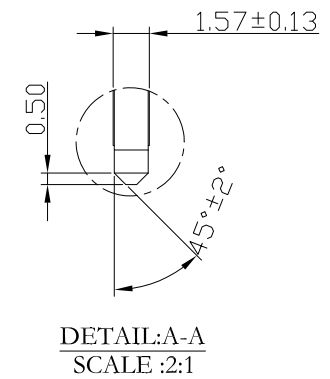
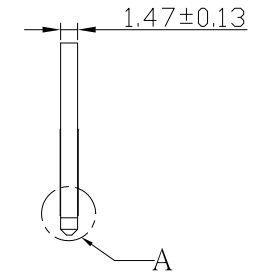
REV.	SPECIFICATION	ECN NO.	APPD.
R4		ECN220326	



RECOMMENDED MATTING BOARD FOOTPRINT
(Tolerance: ±0.05)



P.C. Board Layout
(Tolerance: ±0.05) (Top View)



Tolerances	Dwg. No.	9393-D0000-037		Title:		
x = ±0.5	Projection			9393-J Series Power Edge Connector		
.x = ±0.25	Unit	mm	Scale			1:1
.xx = ±0.15	Drawn By	XS 03/16'22				

OUPIN			
OUPIN ELECTRONIC(KUNSHAN) CO., LTD.			
P/N: 9393-J41P64P21AC05DA-A002			
SHEET	2/2	Ver. No.	R4