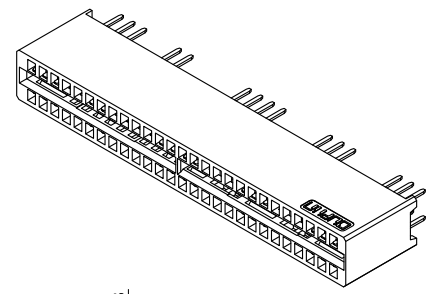


REV.	SPECIFICATION	ECN NO.	APPD.
R2		ECN190903	



**Material and Plating:**

Housing: LCP, UL94V-0, BLACK.  
 Power Contacts: High Conductivity Copper.  
 Gold Plated or Au+Pd/Ni on Contact Area and 80μ" Min  
 Tin Plated on Solder Tail over nickel 50μ" Min.

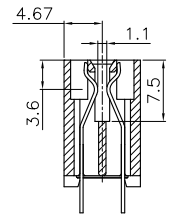
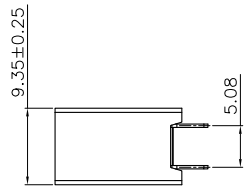
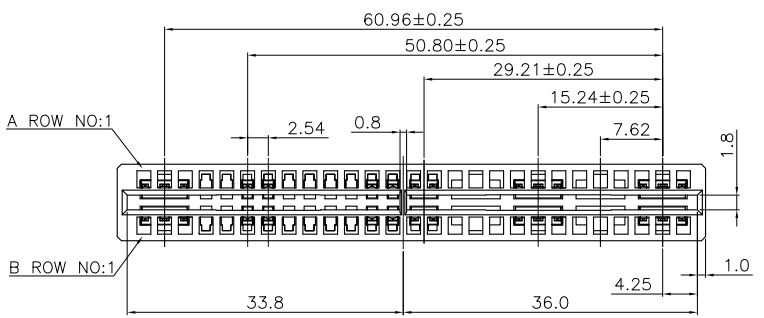
**Electrical Characteristics:**

Current Rating: 12.5 A(UL).  
 Dielectric Withstanding Voltage: DC 1000V For 1 minute.  
 Insulator Resistance: 5000MΩ min. at DC 500V.  
 Contact Resistance: 2.5mΩ max.  
 Operating Temperature: -5°C ~+105°C .

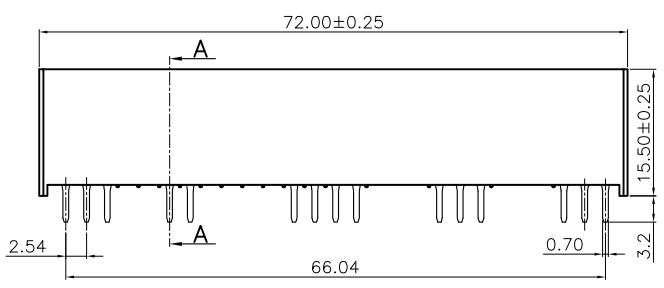
**\*RoHS Compliant**

Note:

A,B Row P4,P5,P8~P11,P16~P18,P22~P24 Without Contact.



SECTION A-A

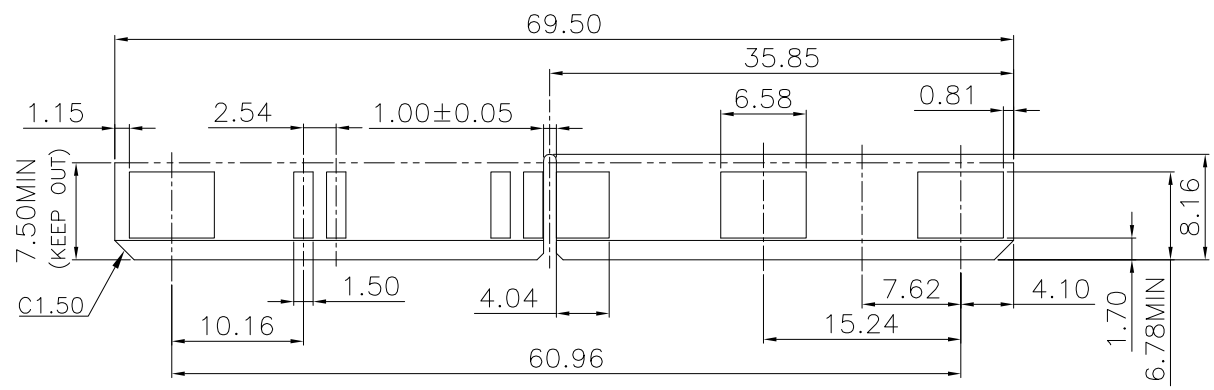


- 9393-D 2 A1 N 1 1 A Cxx D A -A001
- Series
- 2:Female Straight
- A1:Type 1
- N:W/O Post
- P:With Post
- 1:DIM T=3.2mm
- 2:DIM T=2.5mm
- 3:DIM T=4.8mm
- 1:DIM G=1.10mm
- Internal Code
- A:Tray Package
- Dip Type
- CB30:ContactAu+Pd/Ni,Dip Tin 30u"
- Cxx:Selective Gold Plated 10:10μ" 30:30μ"
- A:Power pitch 2.54 B:Power pitch 5.08
- Blank:W/O Front Key 1:With Front Key

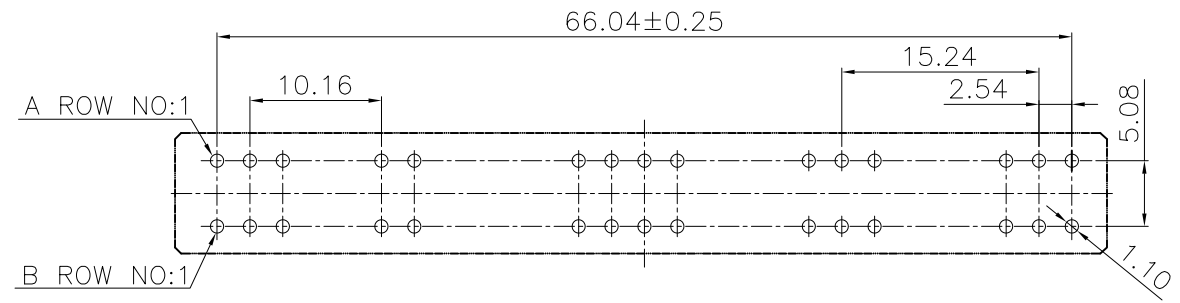
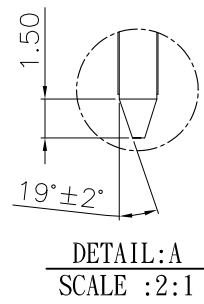
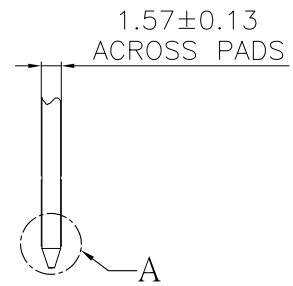
<b>Tolerances</b>	<b>Dwg. No.</b>	<b>9393-D0000-025</b>	<b>Title:</b>		<b>OUPIIN</b> OUPIIN ELECTRONIC(KUNSHAN) CO., LTD. P/N: 9393-D2A1N111ACxxDA-A001
x=±0.50 .x=±0.25 .xx=±0.15	<b>Projection</b>		9393-D Series POWER EDGE CONNECTOR		
	Unit	mm			
	<b>Drawn By</b>		GYJ 09/03'19		<b>SHEET</b> 1/2
					<b>Ver.No.</b> R2

Type	Pin Arrangement				
A1	A ROW	○ ○ ○	○ ○	○ ○ ○ ○	○ ○ ○ ○
	B ROW	○ ○ ○	○ ○	○ ○ ○ ○	○ ○ ○ ○
	P1				P27

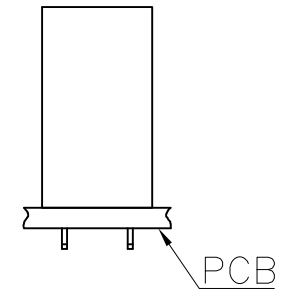
REV.	SPECIFICATION	ECN NO.	APPD.
R1		ECN160621	



RECOMMENDED MATTING CARD LAYOUT (TOP SIDE)  
(Tolerance: ±0.05)



RECOMMENDED P.C.B. BOARD LAYOUT (BOTTOM SIDE)  
AND THE THICKNESS IS 2.00mm



<b>Tolerances</b> x=±0.50 .x=±0.25 .xx=±0.15	Dwg. No.	9393-D0000-025		<b>Title:</b> 9393-D Series POWER EDGE CONNECTOR		
	Projection					
	Unit	mm	Scale			1:1
	Drawn By	GYJ	09/03'19			⊗
					<b>OUPIIN ELECTRONIC(KUNSHAN) CO., LTD.</b> P/N: 9393-D2A1N111ACxxDA-A001	
SHEET		2/2	Ver.No.	R2		