

REV.	SPECIFICATION	ECN NO.	APPD.
R5		ECN190131	

Material and Plating:

Housing:LCP, UL94V-0 , Ivory.

Contacts: Phosphor bronze.

30u" Au+Pd/Ni on Contact Area and 80u" min Tin on Press Fit over 50 u" min Nickel.

Electrical Characteristics:

Current Rating: 1 AMP.

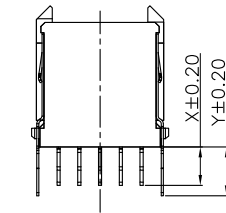
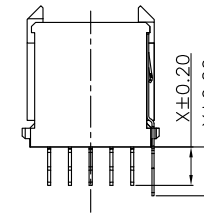
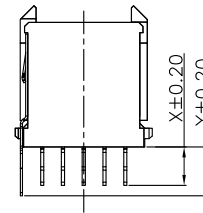
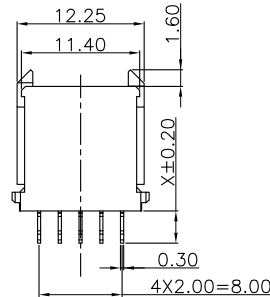
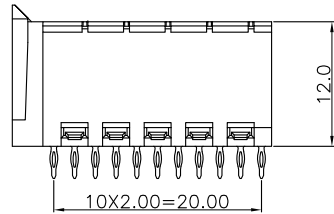
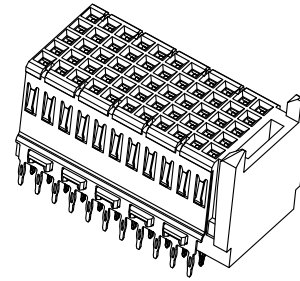
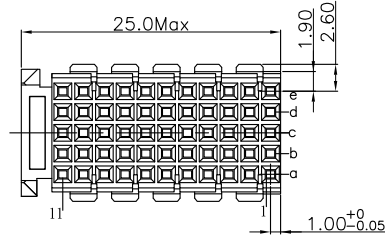
Dielectric Withstanding Voltage: AC 750V For 1 minute.

Insulator Resistance: 10000MΩ min. at DC 500V.

Contact Resistance: 20mΩ max. at DC 100mA.

Operating Temperature: -55°C ~+125°C .

***RoHS Compliant**

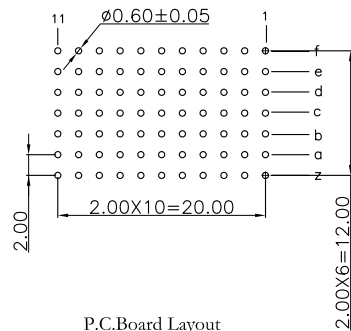


None Shielded

With Front Shielded

With Back Shielded

With Front & Back Shielded



P.C.Board Layout
(Tolerance:±0.05)

- 9111- 7 4 C 55 x x x CB 30 A
- Series
 - 7:Row
 - 4: Female
 - C: Type C
 - Position
 - 0:Dip Length 3.1
 - 1:Dip Length 3.3
 - 2:Dip Length 3.7
 - 1: None Shielded
 - 2:With Front & Back Shielded
 - 3: With Front Shielded
 - 4: With Back Shielded
 - A: Tray Package
 - U: Tube Package
 - 30: 30 u"
 - CB:Dip Tin
 - Contact Au+Pd/Ni
 - Blank : Without Shielded
 - 0: Shielded Length 3.1
 - 1: Shielded Length 3.3
 - 2: Shielded Length 3.7

X Dip Length	0	1	2
	3.1	3.3	3.7
Y Shielded Length	0	1	2
	3.1	3.3	3.7

Tolerances	Dwg. No.	9111D74002	
x = ±0.5 .x = ±0.25 .xx = ±0.15	Projection		
	Unit	mm	Scale 1:1
	Drawn By	dyq	01/16'19

Title: 9111 Series
Hard Metric Connector
Female Straight Type C

OUPIN			
OUPIN ELECTRONIC(KUNSHAN) CO., LTD.			
P/N: 9111-74C55xxxCB30A			
SHEET	1/1	Ver.No.	R5