

REV.	SPECIFICATION	ECN NO.	APPD.
R1			

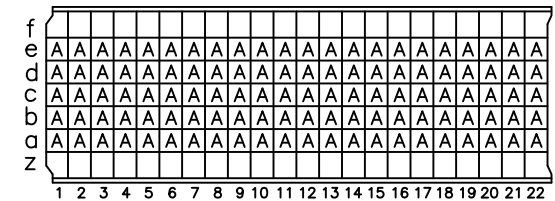
**Material:**

Housing: Thermoplastic Polyester Glass Filled UL94V-0  
 Contacts: Copper Alloy.

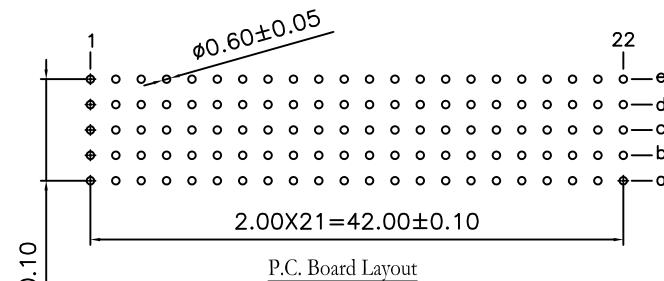
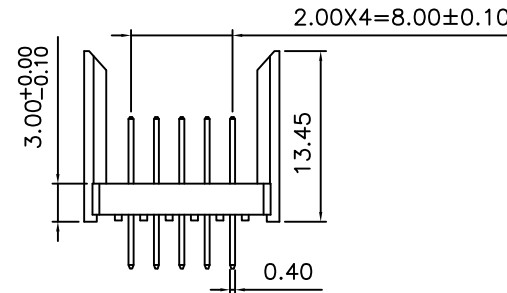
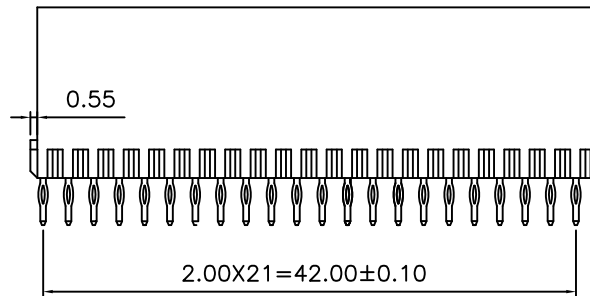
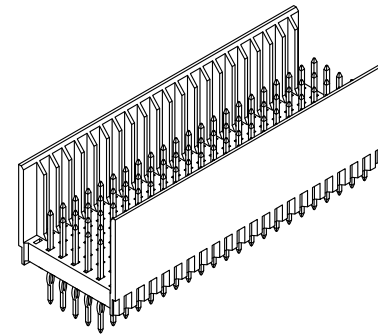
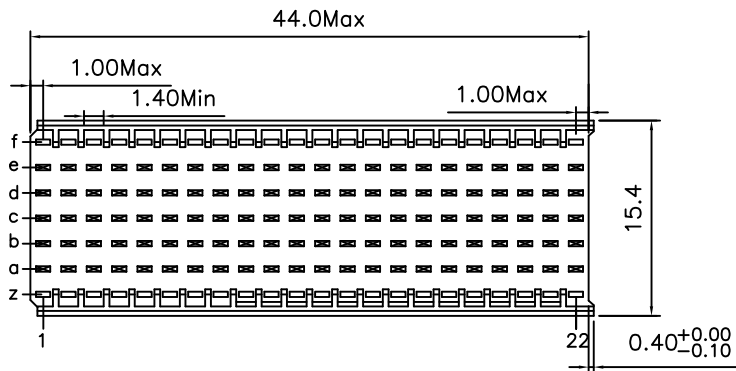
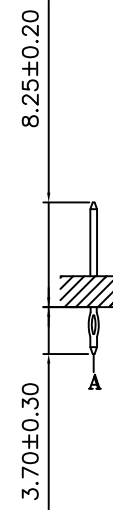
**Electrical Characteristics:**

Current Rating: 1 AMP.  
 Dielectric Withstanding Voltage: AC 750V For 1 minute.  
 Insulator Resistance: 10000MΩ min.at DC 500V.  
 Contact Resistance: 20mΩ max.at DC 100mA.  
 Operating Temperature: -55°C ~ +125°C.

**\*RoHS Compliant**



CONTACT LAYOUT



P.C. Board Layout

9111- 7 1 B 154 E C 10 U  
 Series | 7Row | 1: Male | B: Type B | Housing Type | E:E Option | U: Tube Package | 10: 10 u" | 30: 30 u" | C: Dip Tin | Contact Gold | G: Gold

Tolerances	Dwg. No.	9111D71035		Title:	
x = ±0.5	Projection	⊕ ⊖		9111 Series Hard Metric Connector Male Type B-22	
.x = ±0.25	Unit	mm	Scale		1:1
.xx = ±0.15	Drawn By	Zhu QL 08/02'12			

<b>OUPIN</b>			
OUPIN ELECTRONIC(KUNSHAN) CO., LTD.			
P/N: 9111-71B154ECxxU			
SHEET	1/1	Ver.No.	R1