

REV.	SPECIFICATION	ECN NO.	APPD.
X2			

**Material:**

Housing: High Temperature Plastic UL94V-0.

Contacts: Copper Alloy.

**Electrical Characteristics:**

Current Rating: Signal Pin 1.5A.

Power Pin 12.5A(UL).

Dielectric Withstanding Voltage:

Signal Pin DC 500V For 1 Minute.

Power Pin DC 1000V For 1 Minute.

Contact Resistance: Signal Pin 25mΩ max.

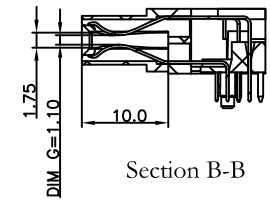
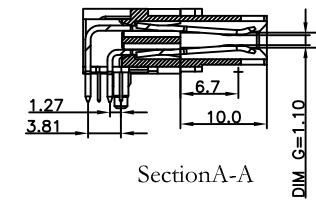
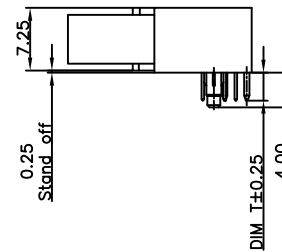
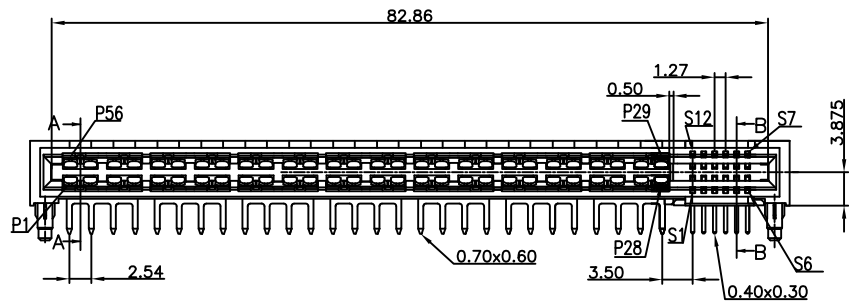
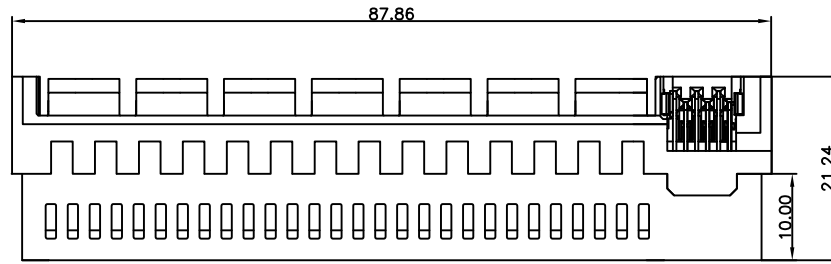
Power Pin 0.6mΩ max.

Insulator Resistance: Signal Pin 500MΩ min.at DC 500V

Power Pin 5000MΩ min.at DC 500V

Operating Temperature: -55°C~+105°C.

**\*RoHS Compliant**

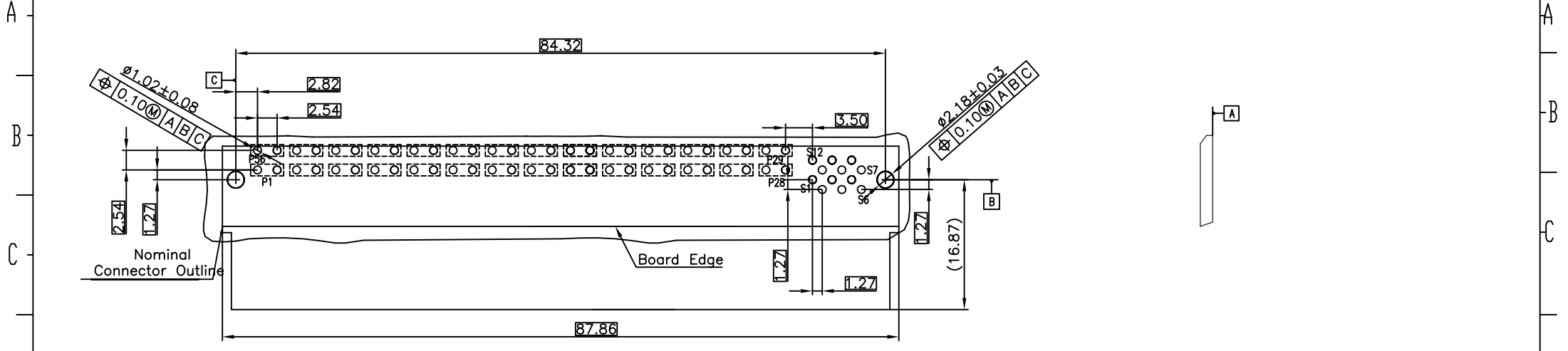


- 9302- 4 A8 S12 P 1 1 1 A CB30 D A
- Series
- 4:Female Right-angle
- A8:28Pwore Pin
- S12:Signal Pin
- N:W/O Post
- P:With Post=4.00mm
- 1: DIM T=3.25mm
- 1: DIM G(GAP)1.10mm
- A :Signal Pitch 1.27
- B :Signal Pitch 2.54
- 1 :With Front Key
- A: Tray Package
- D: Dip Type
- CB30: Contact Au+Pd/Ni,Dip Tin Power pin:30u"
- C10: (Power pin) Selective Gold Plated 10u"

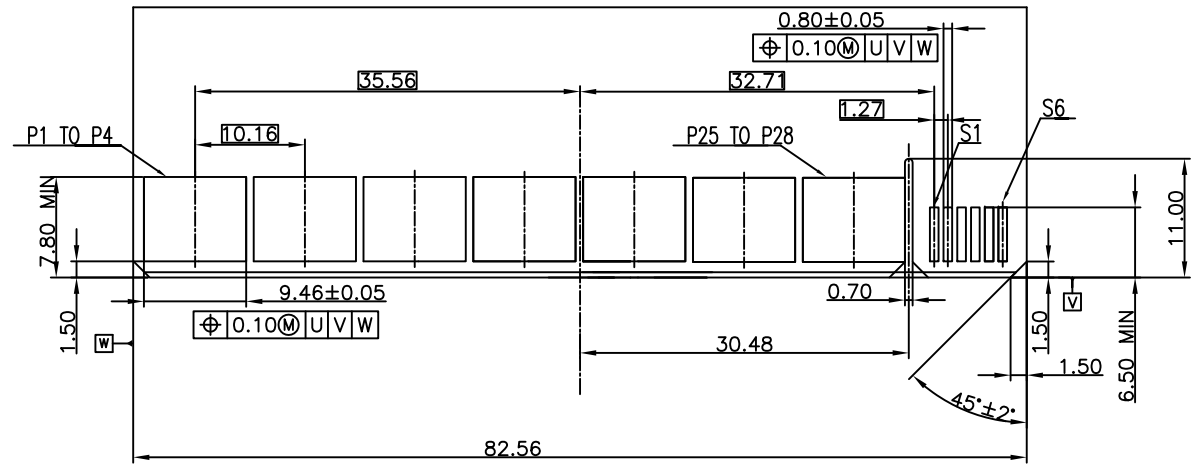
Tolerances	Dwg No.	9302-D0000-020	Title:	
X=0.5	Projection		9302 Series High Power And Signal Edge Card Connector	
.X=0.25	Unit	mm		
.XX=0.15	Scale	1:1		
	Drawn By	LQ 03/11'16		

<b>OUPIIN</b>			
OUPIIN ELECTRONIC(KUNSHAN) CO., LTD.			
P/N: 9302-4A8S12P111ACB30DA			
SHEET	1/2	Ver.No.	X2

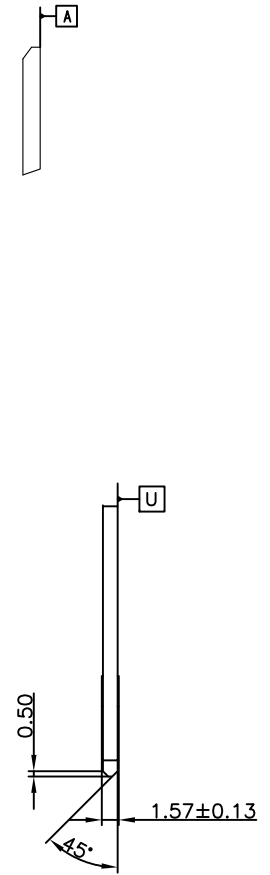
REV.	SPECIFICATION	ECN NO.	APPD.
X2			



P.C. Board Layout  
(Tolerance:  $\pm 0.05$ )



RECOMMENDED MATING BOARD  
FOOT PRINT



Tolerances	Dwg No.	9302-D0000-020	Title:
X=0.5	Projection		9302 Series High Power And Signal Edge Card Connector
.X=0.25	Unit	mm	
.XX=0.15	Scale	1:1	
	Drawn By	LQ 11/20'15	

<b>OUPIIN</b>			
OUPIIN ELECTRONIC(KUNSHAN) CO., LTD.			
P/N: 9302-4A8S12P111ACB30DA			
SHEET	2/2	Ver.No.	X2