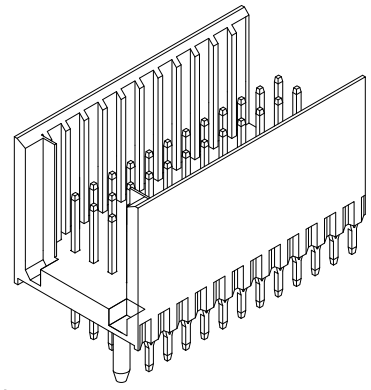
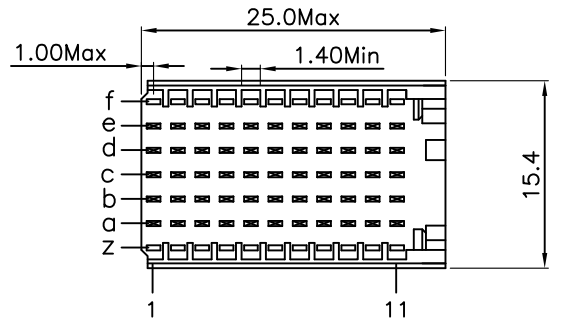


REV.	SPECIFICATION	ECN NO.	APPD.
R2			



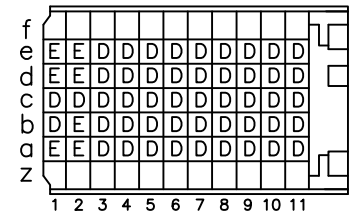
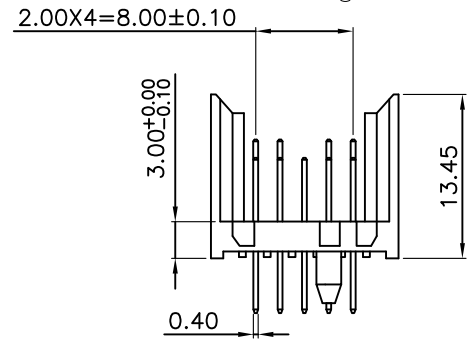
**Material:**

Housing: Thermoplastic Polyester Glass Filled UL94V-0  
 Contacts: Copper Alloy.

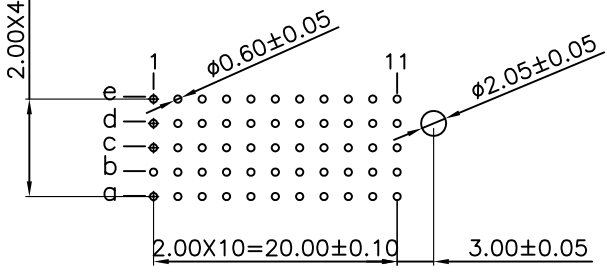
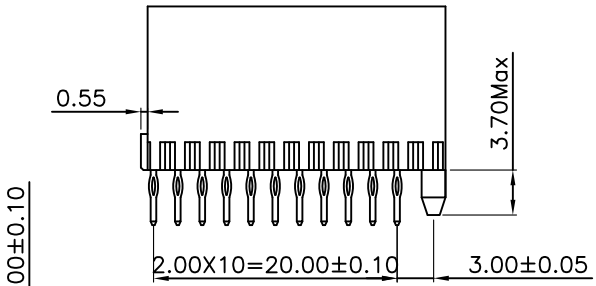
**Electrical Characteristics:**

Current Rating: 1 AMP.  
 Dielectric Withstanding Voltage: AC 750V For 1 minute.  
 Insulator Resistance: 10000MΩ min.at DC 500V.  
 Contact Resistance: 20mΩ max.at DC 100mA.  
 Operating Temperature: -55°C ~ +125°C.

**\*RoHS Compliant**

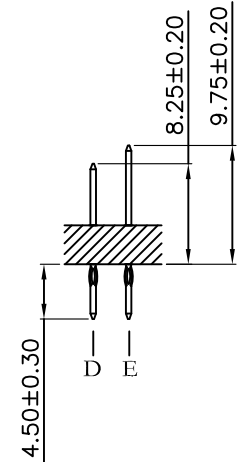


CONTACT LAYOUT



P.C. Board Layout  
(Top View)

9111- 7 1 C 77 Q C xx U  
 Series ———  
 7Row ———  
 1: Male ———  
 C: Type C ———  
 Housing Type ———  
 Q: Q Option ———  
 U: Tube Package  
 10: 10 u"  
 30: 30 u"  
 C: Dip Tin  
 Contact Gold  
 G: Gold



<b>Tolerances</b> x = ±0.5 .x = ±0.25 .xx = ±0.15	<b>Dwg. No.</b>	9111D71179		<b>Title:</b> 9111 Series 2.00 Hard metric Connectors Male Type C	 <b>OUPIIN ELECTRONIC(KUNSHAN) CO., LTD.</b>				
	<b>Projection</b>								P/N: 9111-71C77QCxxU
	<b>Unit</b>	mm	<b>Scale</b>		1:1	<b>SHEET</b>	1/1	<b>Ver.No.</b>	
	<b>Drawn By</b>	Zhu QL 08/04'12							