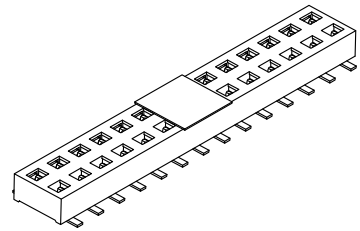
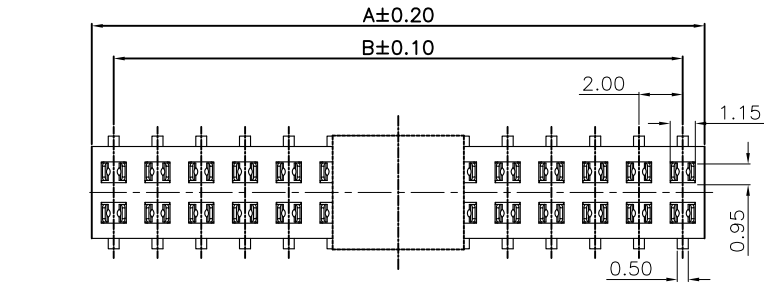
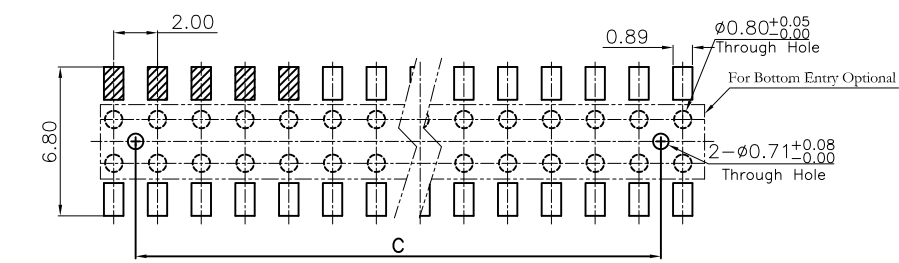
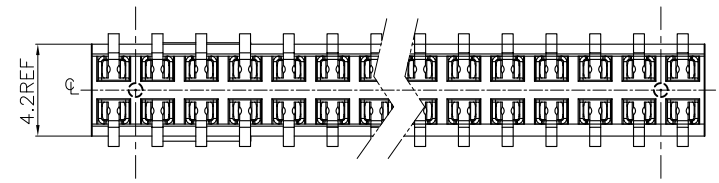
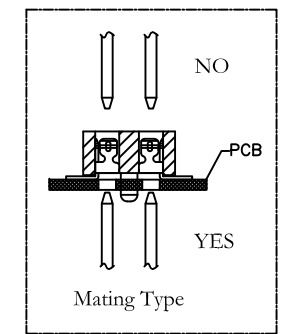
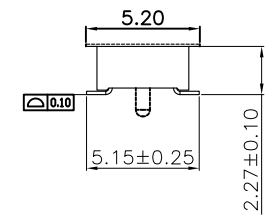
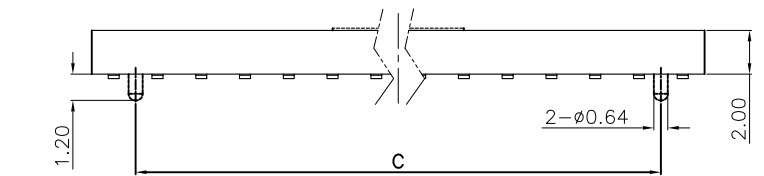


REV.	SPECIFICATION	ECN NO.	APPD.
R2		ECN220741	

A  
B  
C  
D  
E  
F  
G  
H



**Material and Plating :**  
Housing:LCP, UL94V-0, Black.  
Contacts: Phosphor Bronze  
Gold Plated on Contact Area and 80u" Min Tin or Gold Flash  
Plated on Solde Tail over Nickel 50u" Min.  
**Electrical Characteristics:**  
Current Rating: 4.1AMP.  
Dielectric Withstanding Voltage: AC 500V For 1 minute.  
Insulation Resistance: 1000MΩ min. at DC 500V  
Contact Resistance: 20mΩ max. at DC 100mA.  
Operating Temperature: -65°C ~+125°C.  
**\*RoHS Compliant**  
Bottom Entry Insertion Depth: 2.10mm min.  
(Excluding PCB Thick ness).



2146-Z 2 X xx C xx D x T -x  
Series  
Double Row  
No. of Pin Per Row  
G: Gold Plated  
T: Tin Plated  
C: Dip Tin  
Contact Gold  
00: G/F  
10: 10μ"  
15: 15μ"  
30: 30μ"  
S: Mylar  
Blank: W/O Pad  
M: Metal Pad  
T: Tape Reel Package  
U: Tube Package  
P: With Post  
N: Without Post  
D: SMD Type

P.C.Board Layout  
(Tolerance:±0.05)

Position	06 Thru 60
Dimension	
A	2.0 x No. of Positions/2
B	2.0 x No of Positions/2-2.0
C	2.0 x No of Positions/2-4.0

Tolerances	Dwg. No.	2146-D0000-021
x = ±0.5	Projection	
.x = ±0.25	Unit	mm
.xx = ±0.15	Scale	1:1
	Drawn By	ZY 07/26'22

Title: 2146-Z Series  
P.C.B. Socket 2.0  
SMD Type  
Bottom Entry

OUPIN ELECTRONIC(KUNSHAN) CO., LTD.			
P/N: 2146-Z2XxxCxxDxT-x			
SHEET	1/1	Ver.No.	R2

A  
B  
C  
D  
E  
F  
G  
H

1 2 3 4 5 6 7 8 9 10 11 12

1 2 3 4 5 6 7 8 9 10 11 12