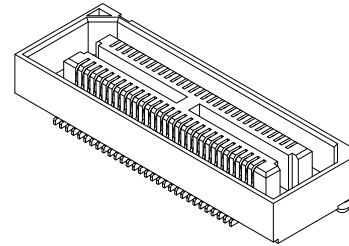
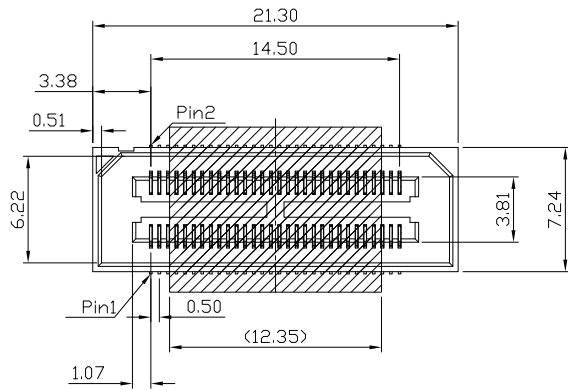


| | | | |
|------|---------------|-----------|-------|
| REV. | SPECIFICATION | ECN NO. | APPD. |
| R3 | | ECN230309 | |



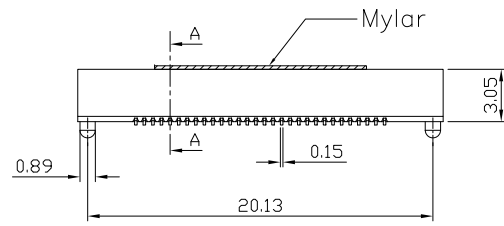
Material and Plating:

Housing: LCP, UL94V-0, Black.
 Signal Contacts :Phosphor Bronze.
 Gold Plated on Contact Area and 80u" Min Tin Plated on Solder Tail over nickel 50u" Min .
 Lock : Brass
 80u" Min Tin Plated over nickel 50u" Min .

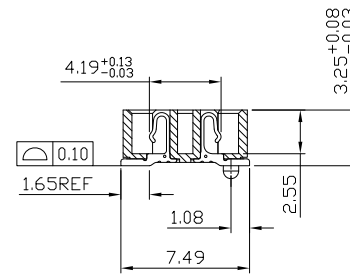
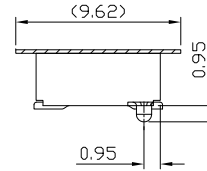
Electrical Characteristics:

Current Rating: Signal: 3A Per Contact With 3 Adjacent Contacts (UL).
 Voltage Rating: 125V AC .
 Dielectric Withstanding Voltage: 525V AC For 1 minute.
 Insulator Resistance: 5000MΩ min at DC 500V.
 Contact Resistance: 45mΩ max .
 Operating Temperature: -55°C ~ +125°C .

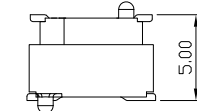
***RoHS Compliant**



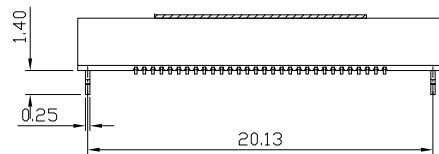
P: With Post Option Shown



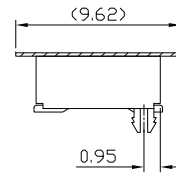
Sectional A-A
Scale 1:1



Mating Height



L: With Lock Option Shown



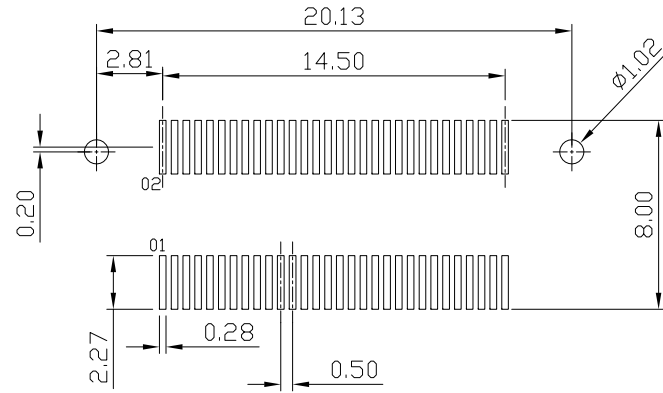
2336- 60 F C x D P 1 T -S

Series ————
 Position ————
 F: Female ————
 C: Selective Gold Plated ————
 1: G/F ————
 3: 10μ" ————
 7: 30μ" ————

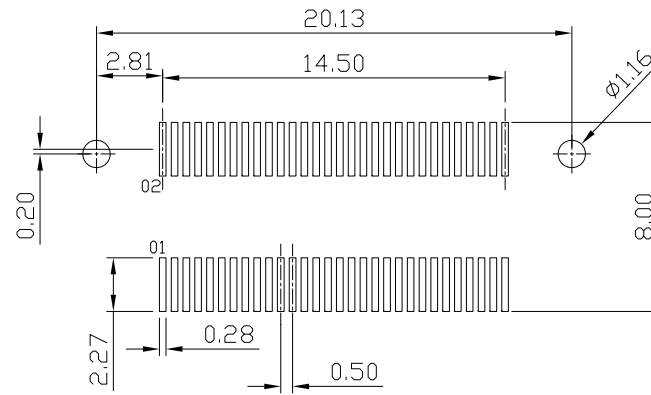
S: Mylar
 T: Tape & Reel Package
 1: Code 1
 N: W/O Post, W/O Lock
 P: With Post, W/O Lock
 L: W/O Post, With Lock
 D: SMD Type

| | | | | | | | | |
|-------------|------------|----------------|---------------------------|-----|--------------------------|-----|-----------------------|--|
| Tolerances | Dwg. No. | 2336-D0000-001 | Title: | | 2336 Series | | OUPIN | |
| x = ±0.5 | Projection | | High Speed Board to Board | | Pitch 0.5mm (Receptable) | | | OUPIN ELECTRONIC(KUNSHAN) CO., LTD. |
| .x = ±0.25 | Unit | mm | Scale | 1:1 | P/N: 2336-60FCxDP1T-S | | P/N: 2336-60FCxDP1T-S | |
| .xx = ±0.15 | Drawn By | WP 03/09'23 | | | SHEET | 1/2 | Ver.No. | R3 |

| | | | |
|------|---------------|-----------|-------|
| REV. | SPECIFICATION | ECN NO. | APPD. |
| R3 | | ECN230309 | |



P.C.Board Layout For P Options
(Tolerance: ± 0.05)



P.C.Board Layout For L Options
(Tolerance: ± 0.05)

| | | | | | | |
|------------------|------------|----------------|---------------------------|-----|--------------------------|---|
| Tolerances | Dwg. No. | 2336-D0000-001 | Title: | | 2336 Series | OUPIN OUPIN ELECTRONIC(KUNSHAN) CO., LTD. |
| x = ± 0.5 | Projection | | High Speed Board to Board | | P/N: 2336-60FCxDP1T-S | |
| .x = ± 0.25 | Unit | mm | Scale | 1:1 | Pitch 0.5mm (Receptable) | SHEET |
| .xx = ± 0.15 | Drawn By | WP 03/09'23 | | | | 2/2 |
| | | | | | | Ver.No. |
| | | | | | | R3 |