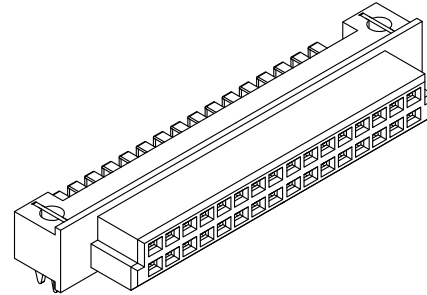
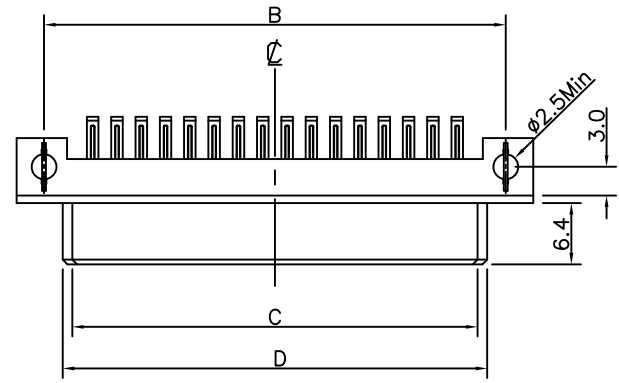


REV.	SPECIFICATION	ECN NO.	APPD.
R2			



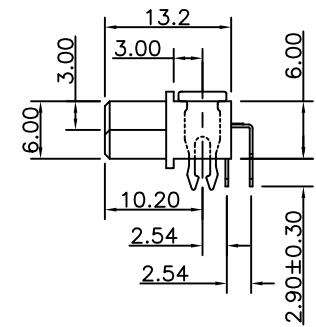
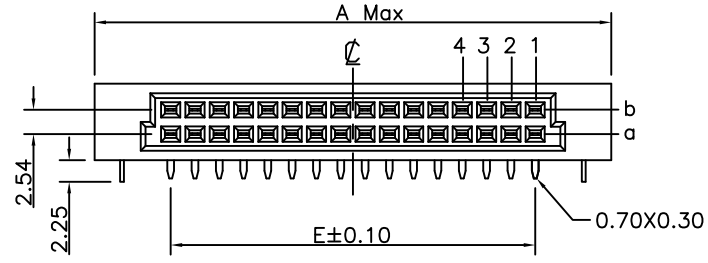
Material:

Housing: Thermoplastic Polyester Glass Filled UL94V-0.
Contacts: Copper Alloy.

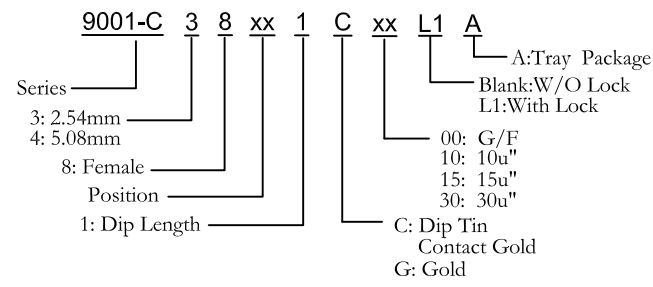
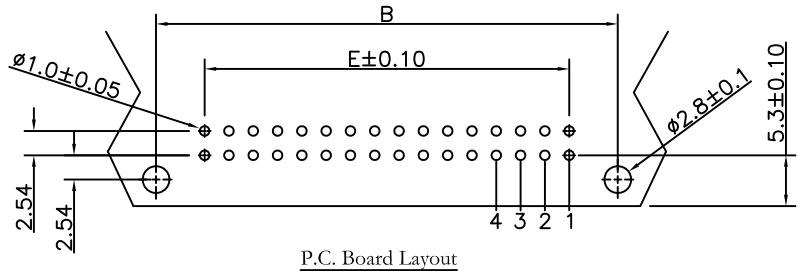
Electrical Characteristics:

Current Rating: 2 AMP.
Dielectric Withstanding Voltage: AC1000V For 1 minute.
Insulator Resistance: 1000M Ω min. at DC 500V.
Contact Resistance: 20m Ω max. at DC 100mA.
Operating Temperature: -55°C ~+125°C.

***RoHS Compliant**



P/N	A	B	C	D	E
9001-C38321C 9001-C38161C 9001-C48161C 9001-C48081C	54.0	48.26	42.36	44.36	38.1
9001-C38201C 9001-C38101C 9001-C48101C 9001-C48051C	38.76	33.0	27.12	29.12	22.86



P/N	Contact Arrange	Rows With Contacts	Position	Pitch
9001-C38321C		a b	32	2.54mm
9001-C38161C		a -	16	
9001-C38201C		a b	20	
9001-C38101C		a -	10	
9001-C48161C		a b	16	5.08mm
9001-C48081C		a -	8	
9001-C48101C		a b	10	
9001-C48051C		a -	5	

Tolerances	Dwg. No.	9001-D0000-008		Title:	
x = ± 0.5	Projection			9001 Series DIN41612 Half Q Type Female	
.x = ± 0.25	Unit	mm	Scale		1:1
.xx = ± 0.15	Drawn By	FL 07/13'12			

OUPIN
OUPIN ELECTRONIC(KUNSHAN) CO., LTD.
P/N: 9001-C3(4)8xx1CxxL1A

SHEET	1/1	Ver.No.	R2
-------	-----	---------	----