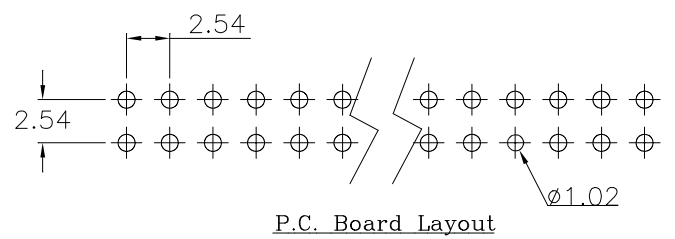
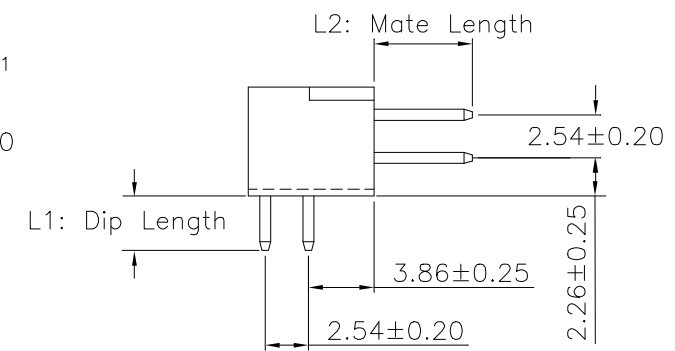
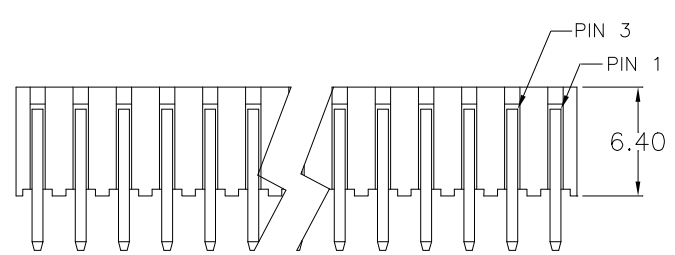
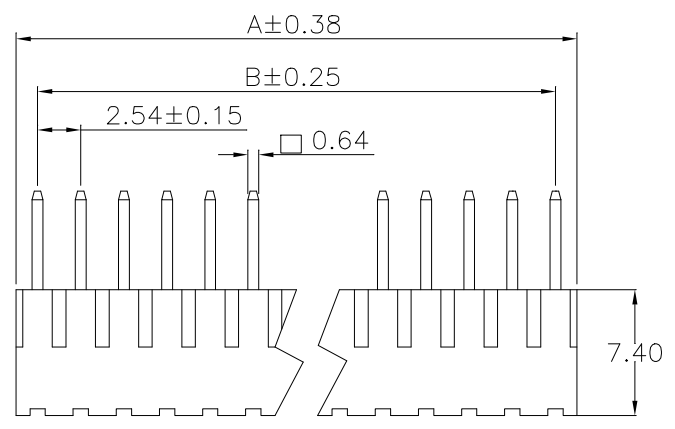


REV.	SPECIFICATION	ECN NO.	APPD.



Material:
Housing: PBT, UL94V-0, Black.
Contacts: Brass, Gold Plated or 70u" Tin Plated over Nickel 50u".
Electrical Characteristics:
Current Rating: 3 AMP.
Dielectric Withstanding Voltage: AC 600V.
Insulator Resistance: 1000MΩ min.
Contact Resistance: 20mΩ max.
Operating Temperature: -40°C~+105°C.
***RoHS Compliant**

Positions	Dimension				
	A	B	Positions	A	B
2X02	5.08	2.54	2X22	55.88	53.34
2X03	7.62	5.08	2X23	58.42	55.88
2X04	10.16	7.62	2X24	60.96	58.42
2X05	12.70	10.16	2X25	63.50	60.96
2X06	15.24	12.70	2X26	66.04	63.50
2X07	17.78	15.24	2X27	68.58	66.04
2X08	20.32	17.78	2X28	71.12	68.58
2X09	22.86	20.32	2X29	73.66	71.12
2X10	25.40	22.86	2X30	76.20	73.66
2X11	27.94	25.40	2X31	78.74	76.20
2X12	30.48	27.94	2X32	81.28	78.74
2X13	33.02	30.48	2X33	83.82	81.28
2X14	35.56	33.02	2X34	86.36	83.82
2X15	38.10	35.56	2X35	88.90	86.36
2X16	40.64	38.10	2X36	91.44	88.90
2X17	43.18	40.64	2X37	93.98	91.44
2X18	45.72	43.18	2X38	96.52	93.98
2X19	48.26	45.72	2X39	99.06	96.52
2X20	50.80	48.26	2X40	101.60	99.06
2X21	53.34	50.80			

Series: 2016- 2 X xx G00 R -L1-L2 U
 Double Row
 No. of Pin Per Row
 G:Gold Flash
 T: Tin Plated
 Blank: For Tin Plated
 B: Bulk Package
 U: Tube Package
 (For 2X04~2X40 Pins)
 T: Tape & Reel Package
 L1: Dip Length
 L2: Mate Length
 R: Right Angle

ie: 2016-2XxxG00R-3.2-5.8U
 3.2mm Dip Length (increment of 0.1mm)
 5.8mm Mate Length (increment of 0.1mm)

Tolerances	Dwg. No.	2016D01001		Title:	
x = ±0.30	Projection	⊕ ⊖		2016 Series	
.x = ±0.25	Unit	mm	Scale	Pin Header 2.54mmX2.54mm	
.xx = ±0.15	Drawn By	Martin	1:N	Double Row Right Angle Solder Type	
.xxx = ±0.10		06/01'23		Φ719	

OUPIN			
OUPIN ELECTRONIC(KUNSHAN) CO., LTD.			
P/N: 2016-2XxxG00R-L1-L2U			
SHEET	1/1	Ver.No.	A5