

REV.	SPECIFICATION	ECN NO.	APPD.
X2			

**Material and Plating:**

Housing: LCP,UL94V-0,Black.  
withstands IR and VPR soldering methods.

Signal Contacts: Phosphor Bronze.  
150u"Min Matte Tin Plated over Nickel 50u"Min.

**Electrical Characteristics:**

Current Rating: 2 AMP.  
Dielectric Withstanding Voltage: AC 1000V For 1 minute.  
Insulator Resistance: 1000MΩ min. at DC 500V.  
Contact Resistance: 20mΩ max. at DC 100mA.  
Operating Temperature: -40°C~+105°C.

**\*RoHS Compliant**

Note:

USCAR 2

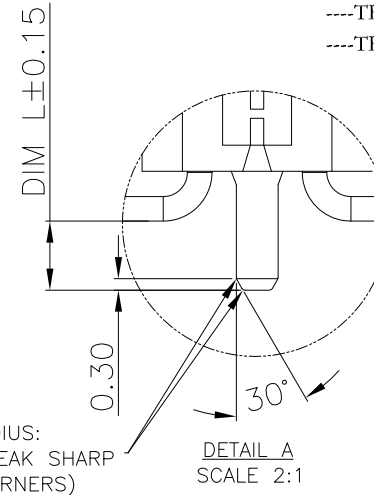
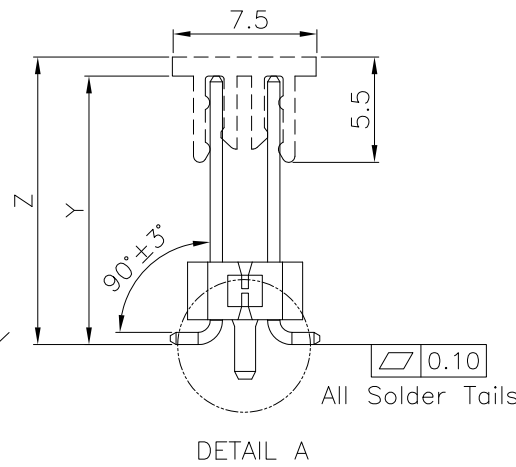
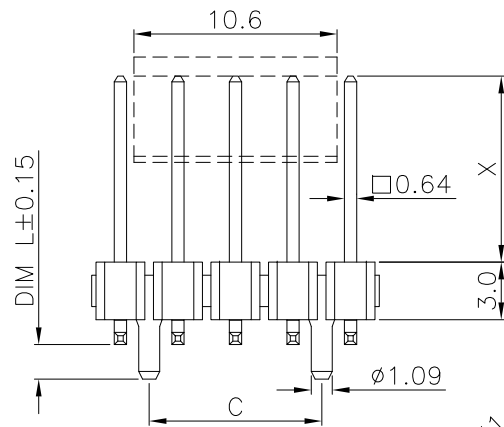
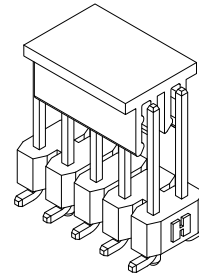
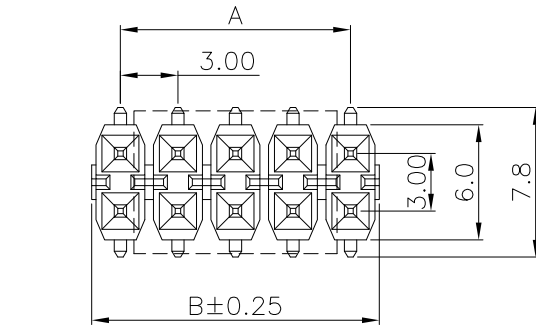
IPC/ECA J-STD 002C

**1.31 VISUAL ACCEPTANCE CRITERIA TESTS,**

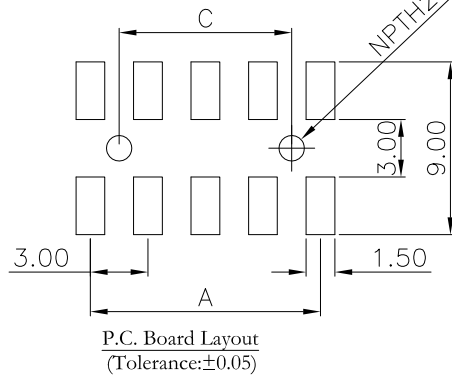
- TEST A: SOLDER BATH DIP AND LOOK TEST
- TEST D: RESISTANCE TO DISSOLUTION/DEWETTING OF METALLIZATION TEST
- TEST S: SURFACE MOUNT PROCESS SIMULATION TEST.

**1.3.2: FORCE MEASUREMENT TESTS**

- TEST E: WETTING BALANCE SOLDER POT TEST
- TEST G: WETTING BALANCE GLOBULE TEST.



X Length	1	2
	9.7	10.5
Y Length	14.0	14.8
Z Length	15.0	15.8



5090- 2 X xx T D x -x T -P

Series: 5090  
Double Row: 2  
No. of Pin Per Row: xx  
Pin Per Row: T  
T: Matte Tin Plated  
D: SMD Type

P: Plastic Pad  
T: Tape & Reel Package  
1: Contact Length(9.7mm)  
2: Contact Length(10.5mm)  
N: Without Post  
P: With Post, DIM L = 1.80mm  
P1: With Post, DIM L = 1.35mm

Tolerances	Dwg. No.	5090-DSxx-001	Title:	5090 Series
x = ±0.5	Projection	$\oplus$ $\nabla$	Automotive Header 3.0X3.0mm	(0.118"X0.118")
.x = ±0.25	Unit	mm	Scale	1:1
.xx = ±0.15	Drawn By	XS 06/29'23		

Dimension									
**Available Position	Positions	A	B	C	**Available Position	Positions	A	B	C
*	2X04	9.00	12.00	6.00		2X10	27.00	30.00	24.00
*	2X05	12.00	15.00	9.00		2X11	30.00	33.00	27.00
	2X06	15.00	18.00	12.00		2X12	33.00	36.00	30.00
	2X07	18.00	21.00	15.00		2X13	36.00	39.00	33.00
	2X08	21.00	24.00	18.00		2X14	39.00	42.00	36.00
	2X09	24.00	27.00	21.00					

**OUPIN**  
OUPIN ELECTRONIC(KUNSHAN) CO., LTD.  
P/N: 5090-2XxxTDx-xT-P  
SHEET 1/1 Ver.No. X2