

REV.	SPECIFICATION	ECN NO.	APPD.

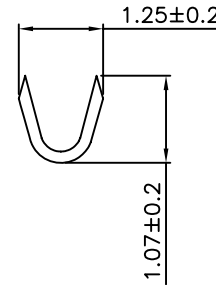
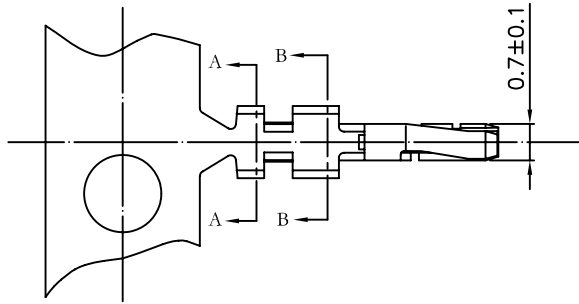
Terminal

Material: Copper Alloy.

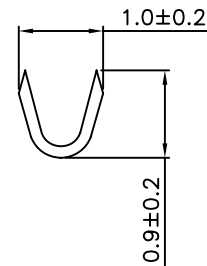
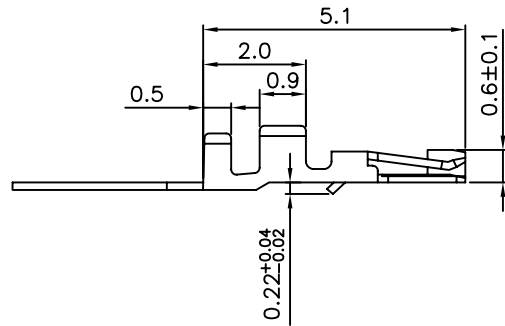
Plating: Gold Plated over Nickel

Recommand Wire: 28AWG to 34AWG

***RoHS Compliant**




A-A Section



B-B Section

4473 - PIN-G-15K

Series G:Gold Plated 15K Pins Per Reel

Tolerances x = ± 0.5 .x = ± 0.25 .xx = ± 0.15	Drawn No.	4473P02001	Title: 4473 Series Terminal		 OUPIIN ELECTRONIC(KUNSHAN) CO., LTD. P/N: 4473-PIN-G-15K			
	Projection							
	Unit	mm	Scale	1:1				
	Drawn By	Yun 03/22'11	SHEET	1/1	Ver.No.	B1		