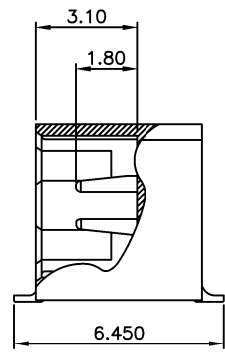
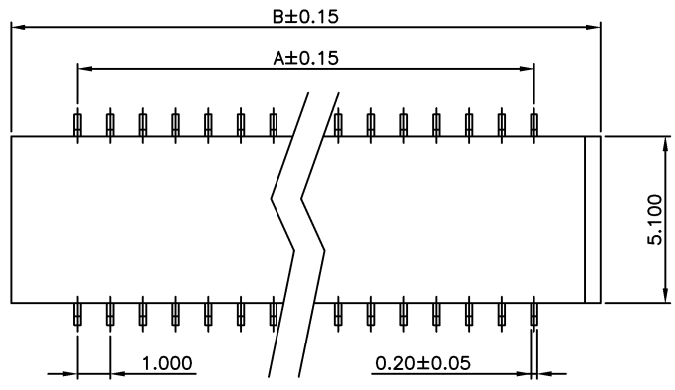
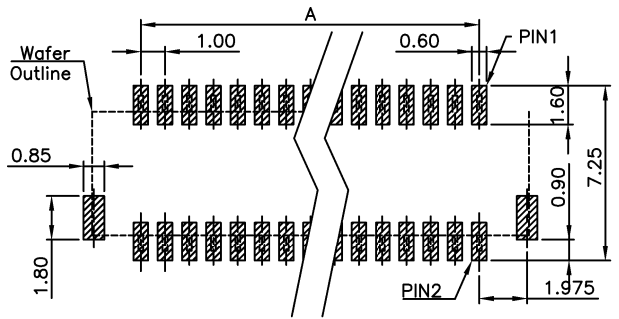
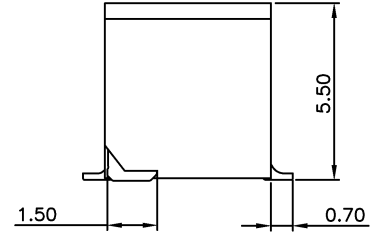
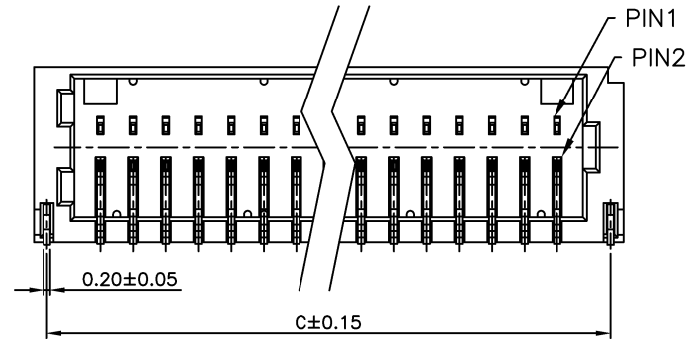


REV.	SPECIFICATION	ECN NO.	APPD.



Material:
Housing: PA6T, UL94V-0, Natural.
Contacts: Phosphor Bronze, 120~130u" Tin Plated over Nickel 50u".
Solder Pad: Phosphor Bronze, 120~130u" Tin Plated over Nickel 50u".

Electrical Characteristics:
Current Rating: 1 AMP.
Dielectric Withstanding Voltage: AC 500V.
Insulator Resistance: 100MΩ min.
Contact Resistance: 20mΩ max.
Operating Temperature: -25°C~+85°C.
***RoHS Compliant**



P.C. Board Layout

4472- 2 **X** xx T **D1** T
Series 2: Double Row No. of Position T: Tin Plated D1: SMD Side Entry U: Tube Package T: Tape & Reel Package

Position	Dimension		
	A	B	C
2x10	9.0	13.1	12.3
2x15	14.0	18.1	17.3
2x20	19.0	23.1	22.3
2x25	24.0	28.1	27.3

Tolerances	Dwg. No. 4472D01003	Title: 4472 Series		OUPIIN OUPIIN ELECTRONIC(KUNSHAN) CO., LTD. P/N: 4472-2XxxTD1T
x = ±0.5	Projection	1.0mm wire to Board		
.x = ±0.35	Unit mm Scale 1:1	Dual Row SMD side Entry Type		
.xx = ±0.25	Drawn By Jerry 10/17'19	① 704	SHEET 1/1	Ver.No. B2