

REV.	SPECIFICATION	ECN NO.	APPD.

Material:

Housing: PA66, UL94V-2, White.

Contacts: Brass, 80u" Tin Plated over Nickel 25u".

Electrical Characteristics:

Voltage Rating: AC/DC 600V RMS.

Current Rating: (Used With #18 AWG)

Circuits	02	04~06	08~10	12~24
Ampere	9 A	8 A	7 A	6 A

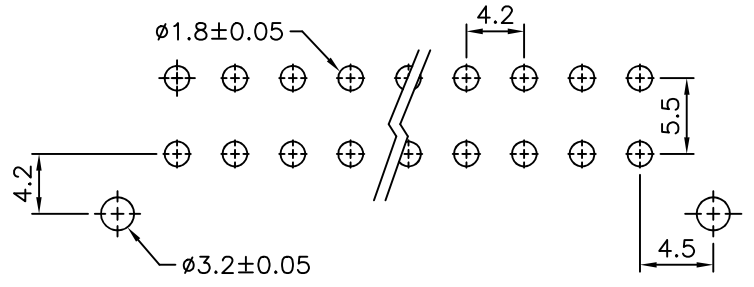
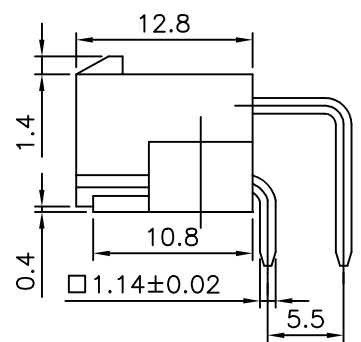
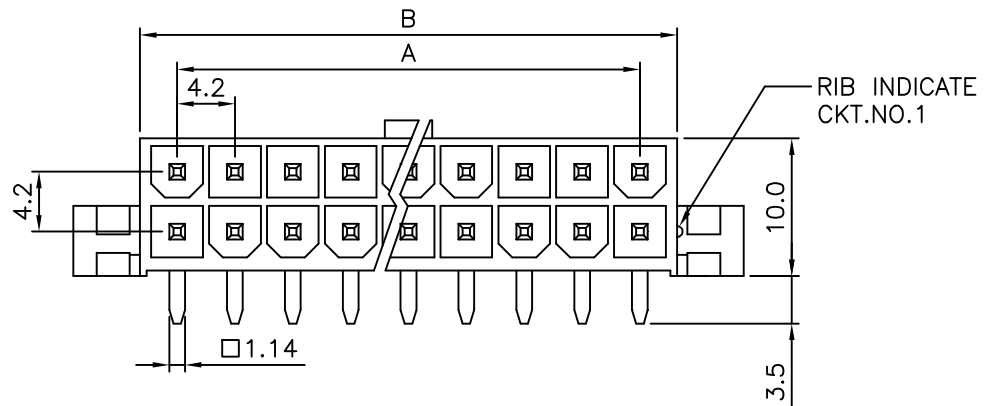
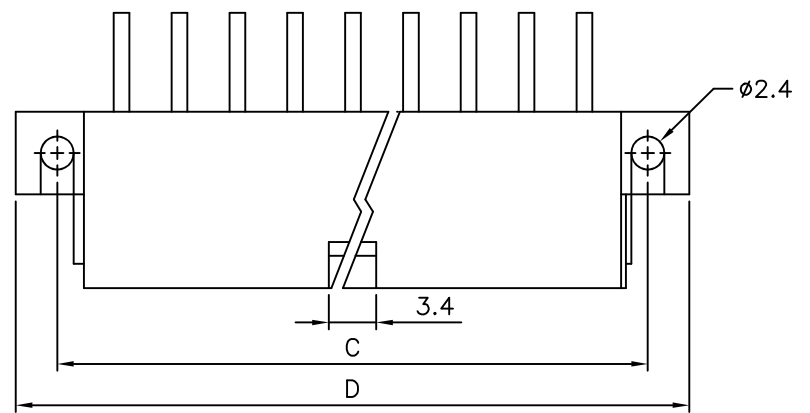
Dielectric Withstanding Voltage: AC 1500V.

Insulator Resistance: 1000M Ω min.

Contact Resistance: 10m Ω max.

Operating Temperature: -40°C~+105°C.

***RoHS Compliant**



P.C.Board Layout

4973- xx T R B
 Series No. of Positions T: Tin Plated B: Bulk Package R: Right Angle

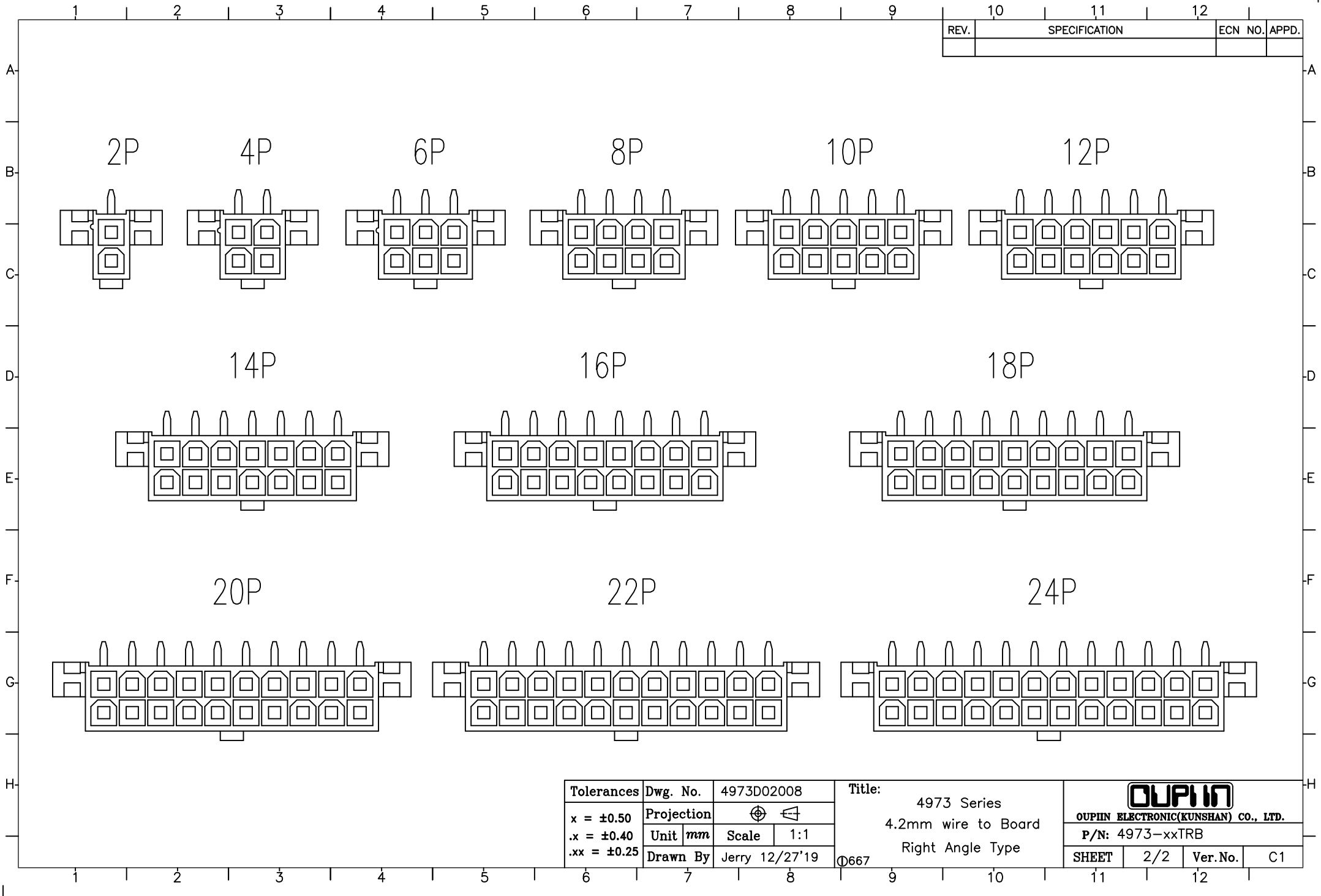
Positions	Dimension			
	A	B	C	D
02		5.4	9.0	15.4
04	4.2	9.6	13.2	19.6
06	8.4	13.8	17.4	23.8
08	12.6	18.0	21.6	28.0
10	16.8	22.2	25.8	32.2
12	21.0	26.4	30.0	36.4
14	25.2	30.6	34.2	40.6
16	29.4	34.8	38.4	44.8
18	33.6	39.0	42.6	49.0
20	37.8	43.2	46.8	53.2
22	42.0	47.4	51.0	57.4
24	46.2	51.6	55.2	61.6

Tolerances	Dwg No.	4973D02008	Title:	
x = ± 0.50	Projection		4973 Series	
.x = ± 0.40	Unit	mm	4.2mm wire to Board	
.xx = ± 0.25	Scale	1:1	Right Angle Type	
	Drawn By	Jerry 12/31'19	①667	

OUPIIN
 OUPIIN ELECTRONIC(KUNSHAN) CO., LTD.
 P/N: 4973-xxTRB

SHEET	1/2	Ver.No.	C1
-------	-----	---------	----

REV.	SPECIFICATION	ECN NO.	APPD.



Tolerances	Dwg. No.	4973D02008	
x = ±0.50	Projection		
.x = ±0.40	Unit	mm	Scale 1:1
.xx = ±0.25	Drawn By	Jerry 12/27'19	

Title:
 4973 Series
 4.2mm wire to Board
 Right Angle Type

OUPIIN			
OUPIIN ELECTRONIC(KUNSHAN) CO., LTD.			
P/N: 4973-xxTRB			
SHEET	2/2	Ver.No.	C1

0667