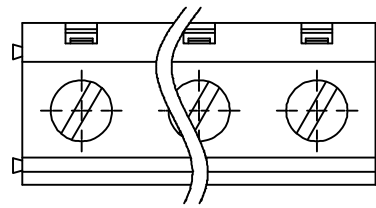
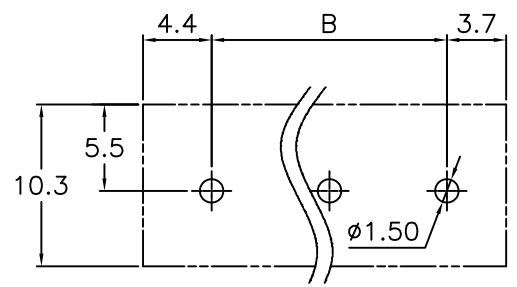
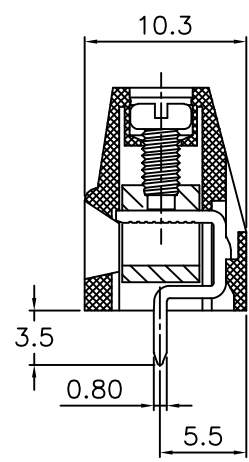
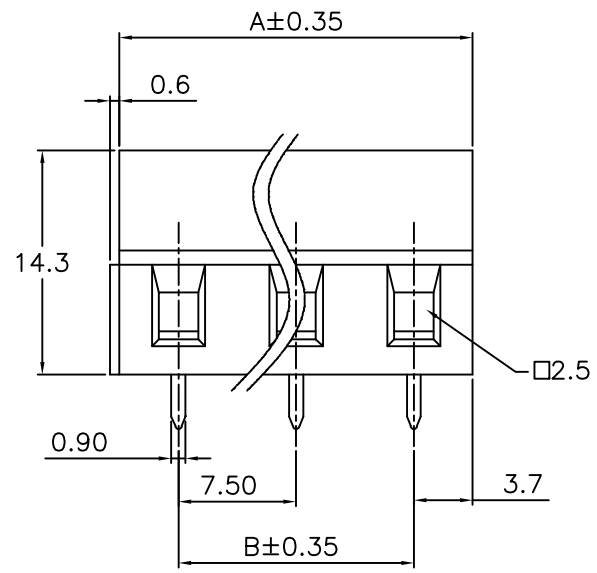


REV.	SPECIFICATION	ECN NO.	APPD.



**Material:**  
Housing: Thermoplastic Polyester UL94V-0.  
Solder Pin: Copper Alloy, Tin Plated.  
Clamp: Copper Alloy, Ni Plated.  
Screw: Metal, Zinc Plated, M2.5

**Electrical Characteristics:**  
Voltage Rating: 300V AC.  
Current Rating: 10A.  
Solid Wire(AWG): 12-22.  
Stranded Wire(AWG): 12-22.  
Torque(Lb-In): 3.5 Lb-In.  
Wire Strip Length: 6-7mm.  
Withstanding Voltage: 1.6KV.  
Operating Temperature: -40°C~+115°C.  
**\*RoHS Compliant**



P.C. Board Layout

8932- I 103143 G AA xx S B  
Series I:Pitch Manufacturing Code G:Green AA:Slotted No. of S:Straight B:Bulk  
7.5mm Code B:Black "-Screw Positions Package  
Y:Grey U:Blue

Position	2 Thru 12
Dimension	
A	No. of PositionsX7.5
B	(No. of Positions-1)X7.5

Tolerances	Dwg. No.	8932D02016	Title:
x = ±0.50	Projection		8932 Series 7.5mm Terminal Block
.x = ±0.30	Unit	mm	
.xx = ±0.15	Scale	1:1	
	Drawn By	Vic Lyu01/07'15	①780

<b>OUPIN</b>			
OUPIN ELECTRONIC(KUNSHAN) CO., LTD.			
P/N: 8932-1103143GAxxSB			
SHEET	1/1	Ver.No.	X1