

REV.	SPECIFICATION	ECN NO.	APPD.
R2		ECN171026	

**Material and Plating:**

Housing: LCP, UL94V-0, BLACK.

Power Contacts: High Conductivity Copper .  
30u" Au+Pd/Ni on Contact Area and 80u" Min Tin Plated on Solder Tail over nickel 50u" Min under plated .

**Electrical Characteristics:**

Current Rating: 12.5 A(UL).

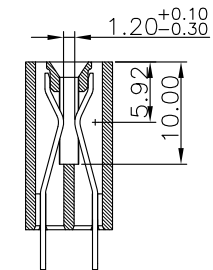
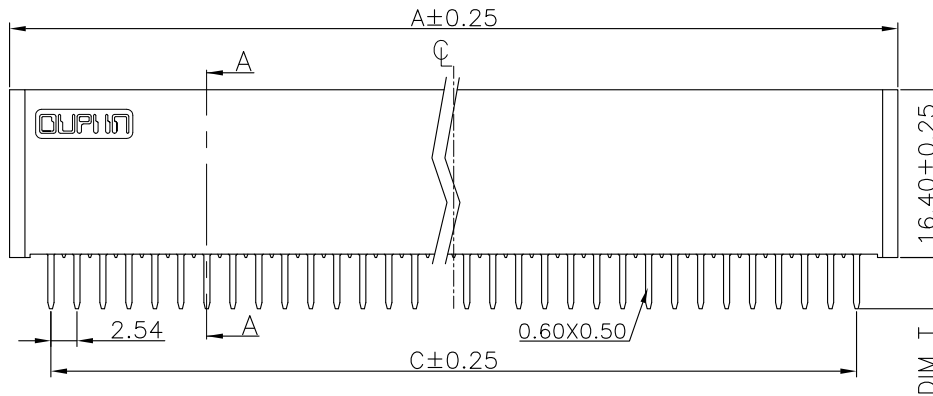
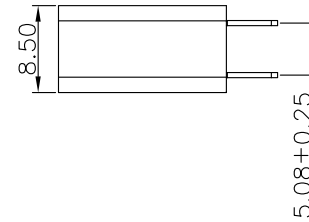
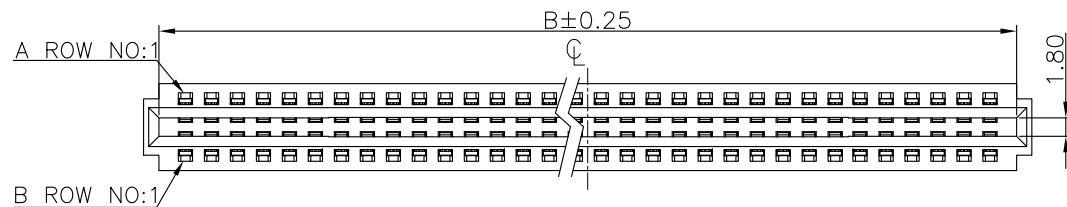
Dielectric Withstanding Voltage: DC 1000V For 1 minute.

Insulator Resistance: 5000MΩ min. at DC 500V.

Contact Resistance: 2.5mΩ max. at DC 100mA.

Operating Temperature: -5°C ~+105°C .

**\*RoHS Compliant**



SECTION A-A

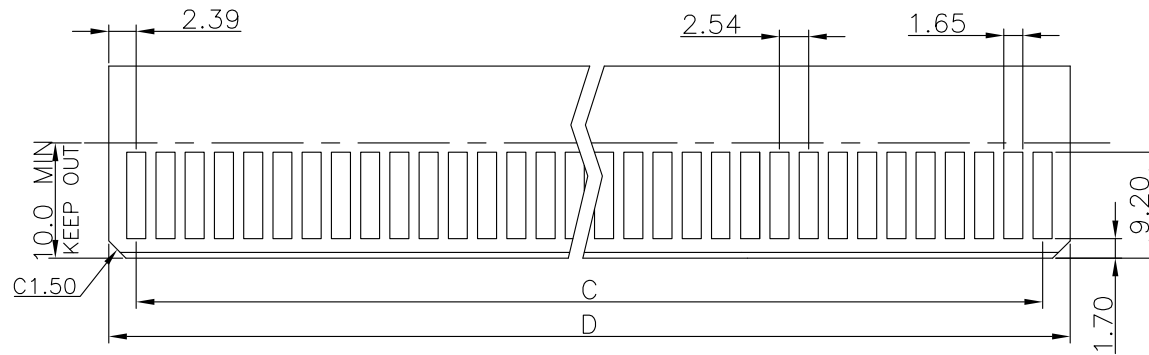
9393-F 2 Pxx N x 1 A CB30 D A  
 Series  
 2:Female Straight  
 Position  
 N:W/O Post  
 P:With Post  
 1:DIM T=3.5mm  
 2:DIM T=2.8mm  
 3:DIM T=5.0mm  
 A: Tray Package  
 D:Dip Type  
 P:Press-Fit Type  
 CB30:Contact Au+Pd/Ni,Dip Tin  
 30: 30u"  
 A:Power pitch 2.54  
 B:Power pitch 5.08  
 1:DIM G(GAP)=1.2mm

Position	DIM			
	A	B	C	D
50	69.04	66.04	60.96	65.74
64	86.82	83.82	78.74	83.52

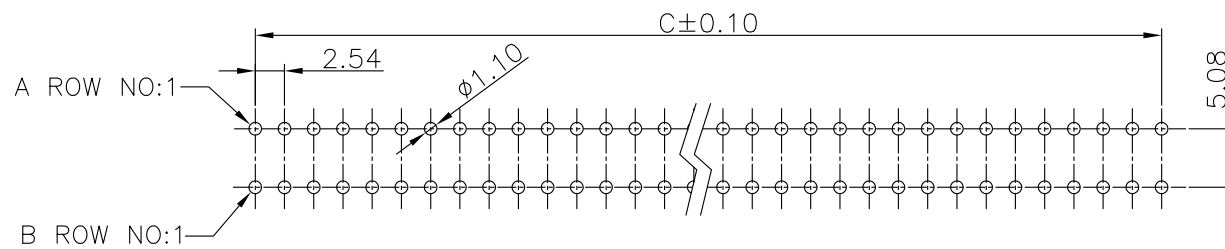
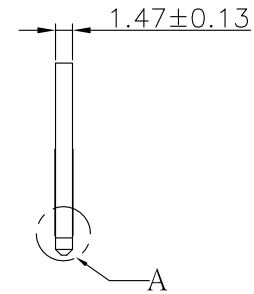
Tolerances	Dwg. No.	9393-D0000-017	Title:	
x = ±0.5	Projection		9393-F Series	
.x = ±0.25	Unit	mm	Scale	1:1
.xx = ±0.15	Drawn By	CXP10/26'17	Power Edge Connector	

OUPIIN ELECTRONIC(KUNSHAN) CO., LTD.			
P/N: 9393-F2PxxNx1ACB30DA			
SHEET	1/3	Ver. No.	R2

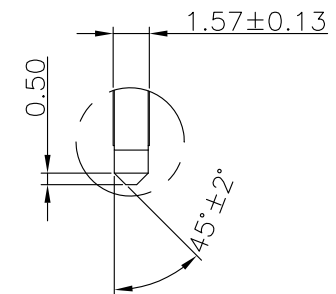
REV.	SPECIFICATION	ECN NO.	APPD.
R2		ECN171026	



RECOMMENDED MATTING BOARD FOOTPRINT  
(Tolerance: ±0.05)



P.C. Board Layout  
(Tolerance: ±0.05)



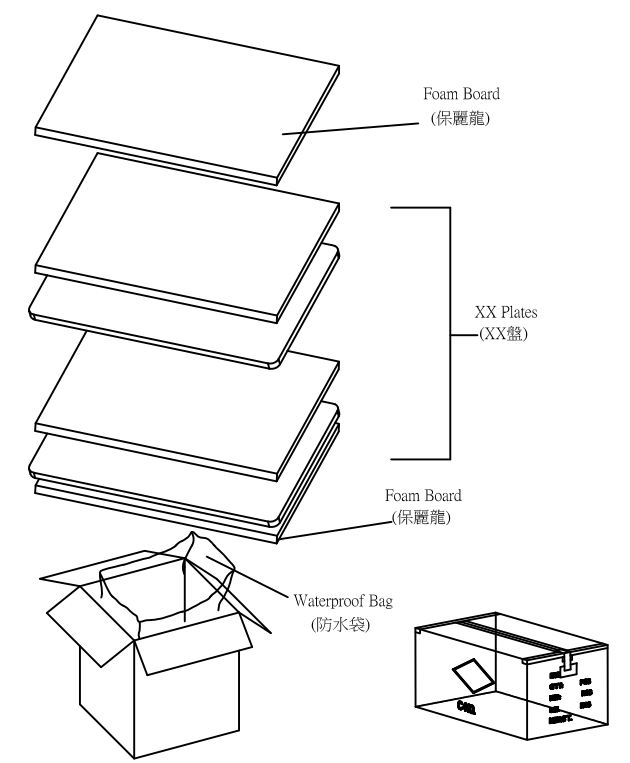
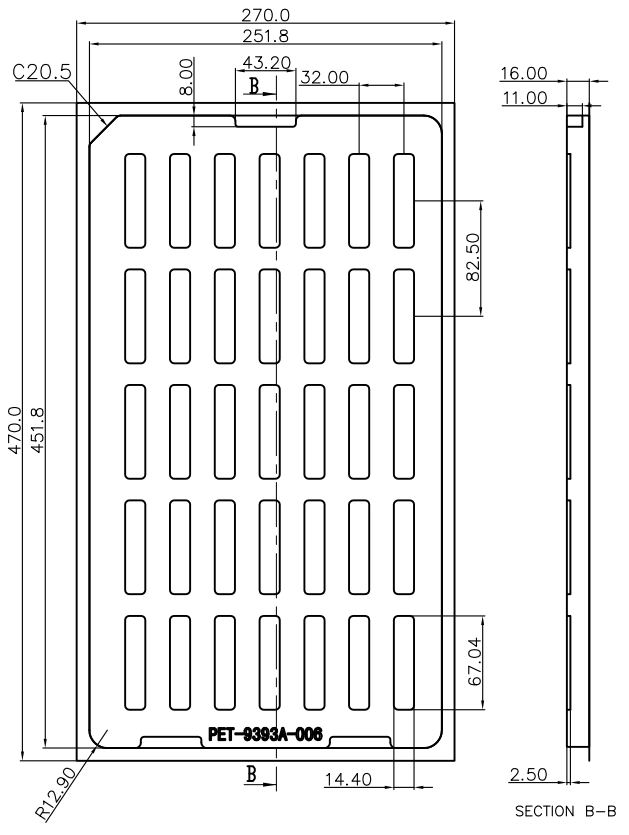
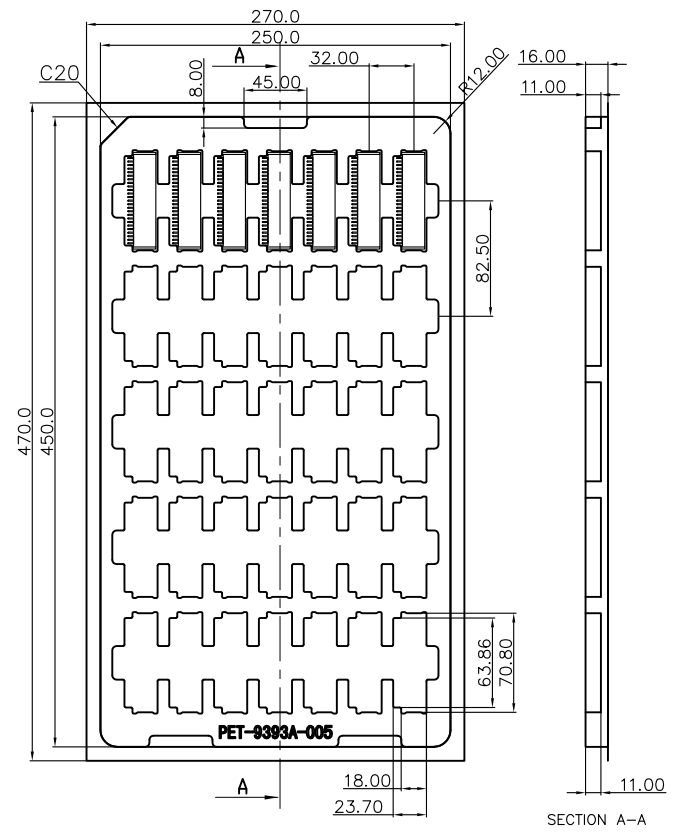
DETAIL: A-A  
SCALE : 2:1

Tolerances	Dwg. No.	9393-D0000-017		Title:		
x = ±0.5	Projection			9393-F Series Power Edge Connector		
.x = ±0.25	Unit	mm	Scale			1:1
.xx = ±0.15	Drawn By	CXP10/26'17				


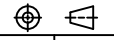
<b>OUPIN</b>			
OUPIN ELECTRONIC(KUNSHAN) CO., LTD.			
P/N: 9393-F2PxxNx1ACB30DA			
SHEET	2/3	Ver. No.	R2

REV.	SPECIFICATION	ECN NO.	APPD.
R2		ECN171026	

注意：底盤PET-9393A-005厚度=0.6mm  
蓋子PET-9393A-006厚度=0.5mm



生产参数	
颗数	35颗/盘
盘数	6盘/箱
包装数	210颗/箱

Tolerances	Dwg. No.	9393-D0000-017	Title:		 <b>OUPIIN ELECTRONIC(KUNSHAN) CO., LTD.</b> P/N: 9393-F2PxxNx1ACB30DA	
x = ±0.5	Projection		9393-F Series			
.x = ±0.25	Unit	mm	Scale	1:1		
.xx = ±0.10	Drawn By	CXP 10/26'17	Power Edge Connector			
			SHEET	3/3	Ver. No.	R2