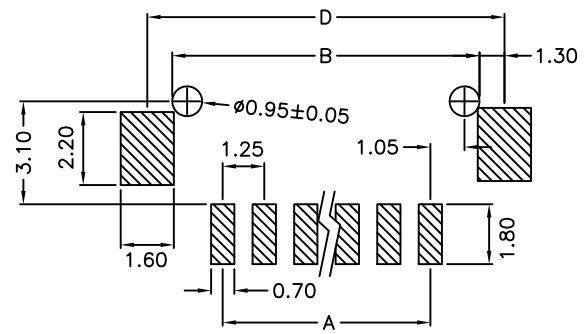
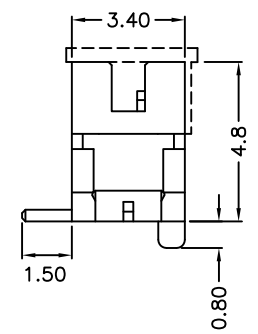
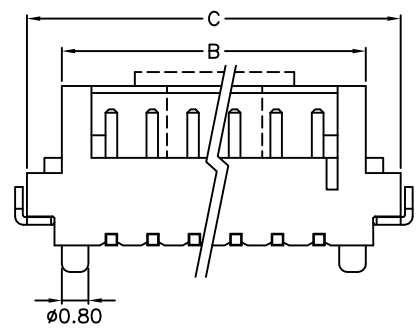
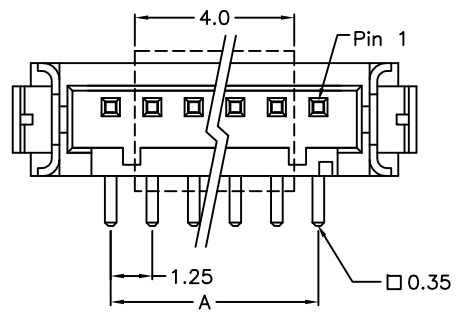


REV.	SPECIFICATION	ECN NO.	APPD.



P.C. Board Layout

4574- 1 X xx T D3 I - P
 Series Single Row No. of Pin Per Row T: Tin Plated D3: SMD Top Entry < Straight > I: Tape & Reel Package P: Plastic Pad

Material:

Housing: PA6T, UL94V-0.
 Contacts: Brass, 100μ" min Tin Plated over Nickel 30μ" min.
 Shell: Brass, 100μ" min Tin Plated over Nickel 30μ" min.

Electrical Characteristics:

Current Rating: 1 AMP.
 Dielectric Withstanding Voltage: AC 500V For 1 minute.
 Insulator Resistance: 500MΩ min. at DC 100V.
 Contact Resistance: 20mΩ max.
 Operating Temperature: -25°C~+85°C.

***RoHS Compliant**

Position	Dimension			
	A	B	C	D
2	1.25	4.15	6.25	5.75
3	2.50	5.40	7.50	7.00
4	3.75	6.65	8.75	8.25
5	5.00	7.90	10.00	9.50
6	6.25	9.15	11.25	10.75
7	7.50	10.40	12.50	12.00
8	8.75	11.65	13.75	13.25
9	10.00	12.90	15.00	14.50
10	11.25	14.15	16.25	15.75
11	12.50	15.40	17.50	17.00
12	13.75	16.65	18.75	18.25
13	15.00	17.90	20.00	19.50
14	16.25	19.15	21.25	20.75
15	17.50	20.40	22.50	22.00

Tolerances	Drawn No.	4574D01002	
x = ±0.5	Projection	⊕ ⊖	
.x = ±0.25	Unit	mm	Scale 1:1
.xx = ±0.15	Drawn By	Scott 05/31'16	

Title: 4574 Series
 1.25mm Wire To Board
 Header SMD 180° Type
 704

OUPIN
OUPIN ELECTRONIC(KUNSHAN) CO., LTD.
 P/N: 4574-1XxxTD3T-P

SHEET	1/1	Ver.No.	A4
--------------	-----	----------------	----