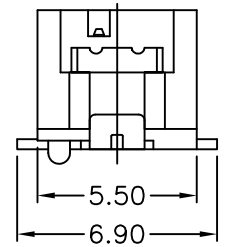
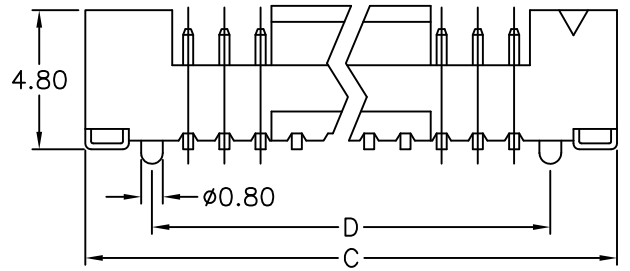
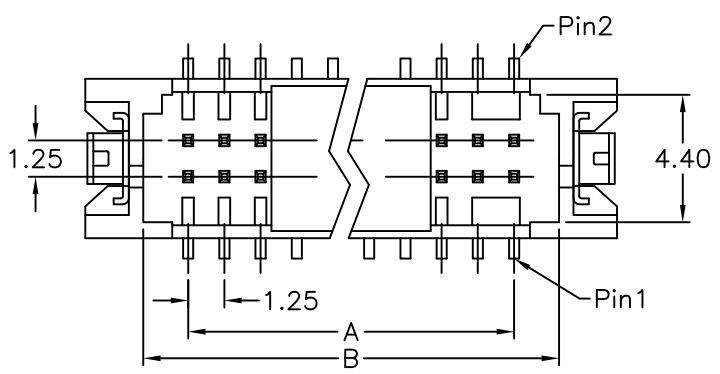


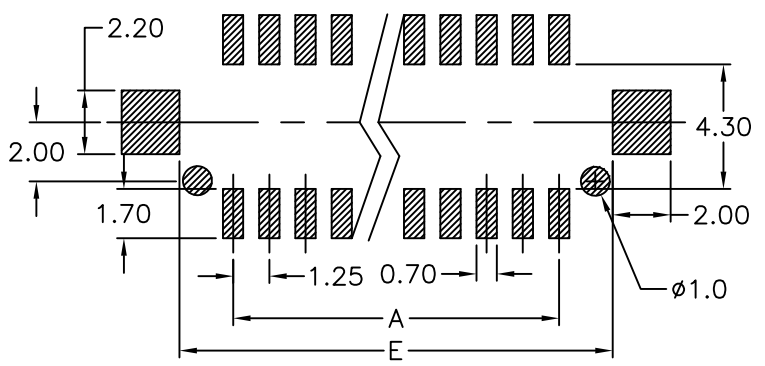
REV.	SPECIFICATION	ECN NO.	APPD.

**Material:**  
Housing: NY6T, UL94V-0, Natural.  
Contacts: Brass, Gold Flash on Contact Area and  
60~120μ" Tin Plated on Solder Tail over Nickel 40~100μ".  
Solder Tad: Phosphor Bronze,  
120~180μ" Tin Plated over Nickel 40~100μ".

**Electrical Characteristics:**  
Current Rating: 1 AMP.  
Dielectric Withstanding Voltage: AC 500V For 1 minute.  
Insulator Resistance: 500MΩ min. at DC 100V.  
Contact Resistance: 30mΩ max. at DC 100mA.  
Operating Temperature: -35°C~+85°C.  
**\*RoHS Compliant**



4574- 2 X xx C 00 D3 U - P  
Series Double Row No. of Pin Per Row C: Selective Plated 00: G/F D3: SMD Top Entry (Straight) U: Tube Package T: Tape&Reel Package Blank: W/O Pad P: Plastic Pad



P.C. Board Layout

Position	Dimension				
	A	B	C	D	E
2X05	5.00	8.10	12.10	7.50	8.70
2X10	11.25	14.35	18.35	13.75	14.95
2X15	17.50	20.60	24.60	20.00	21.20
2X20	23.75	26.85	30.85	26.25	27.45

Tolerances	Dwg. No.	4574D01001	Title:		4574 Series			
x = ±0.5	Projection		1.25mm Wire To Board		Header SMD Type			
.x = ±0.25	Unit	mm	Scale	1:1	P/N: 4574-2XxxC00D3U-P		SHEET	
.xx = ±0.15	Drawn By	Vic Lyu02/22'16	704		1/1		Ver.No. B4	