

REV.	SPECIFICATION	ECN NO.	APPD.
R6		ECN220849	

### Material and Plating:

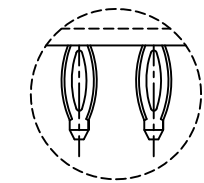
Housing: PBT,UL94V-0,Black  
 Contacts: Brass  
 Gold plated or 80u"min Tin Plated on contact area and  
 Gold Flash or 80u"min Tin Plated on press fit or solder tail  
 over Nickel 50u"Min.

### Electrical Characteristics:

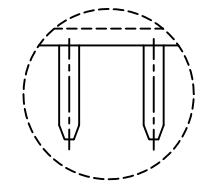
Current Rating: 2 AMP.  
 Dielectric Withstanding Voltage: AC 1000V for 1 minute.  
 Insulator Resistance: 1000MΩ min. at DC 500V.  
 Contact Resistance: 20mΩ max. at DC 100mA.  
 Operating Temperature: -55°C~+105°C .

### \*RoHS Compliant

Insertion Depth: 2.55mm to 6.20mm.

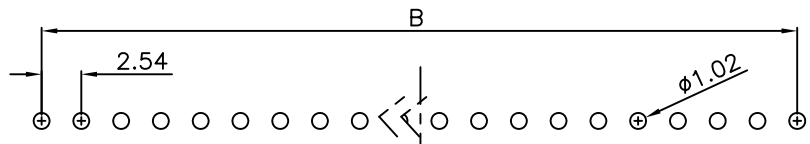
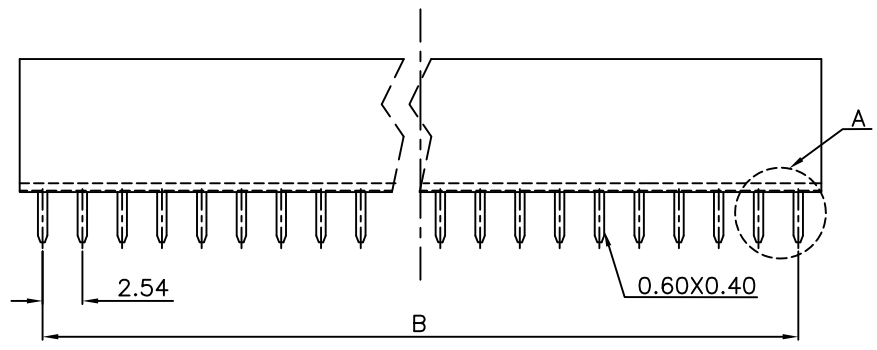
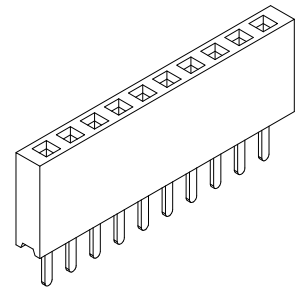
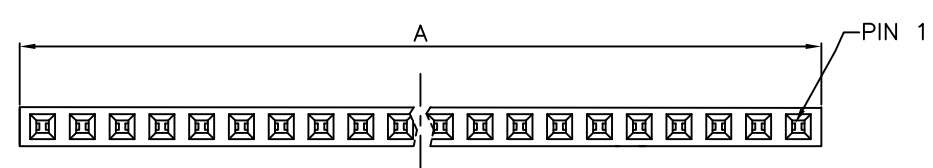


Press Fit Type



Dip Type

Detail A  
 Scale:2 : 1



P.C. Board Layout  
 (Tolerance:±0.05)

2044- 1 X xx G xx S P A  
 Series Single Row No. of Pin Per Row G: Gold Plated T: Tin Plated MT:Matte Tin Plated  
 A: Tray Package B: Bulk Package P: Press Fit Type Blank: Dip Type S: Straight  
 00: G/F  
 10: 10μ"  
 15: 15μ"  
 30: 30μ"

Position Dimension	2 Thru 40
A	2.54 X No. of Position +0.4
B	2.54 X No. of Position -2.54

Tolerances	Dwg. No.	2044-D0000-001	Title:		 <b>OUPIIN ELECTRONIC(KUNSHAN) CO., LTD.</b> <b>P/N: 2044-1XxxGxxSPA</b>	
x = ±0.5	Projection		2044 Series			
.x = ±0.25	Unit	mm	Scale	1:1		
.xx = ±0.15	Drawn By	ZY 08/23'22	P.C.B. Socket 2.54mm(0.100")			
			SHEET	1/1	Ver. No.	R6