

REV.	SPECIFICATION	ECN NO.	APPD.
R8		ECN170812	

Material:

Housing: High Temperature Plastic UL94V-0.

Contacts: Copper Alloy

Electrical Characteristics:

Current Rating: 1 AMP.

Dielectric Withstanding Voltage: AC 500V For 1 minute.

Insulator Resistance: 1000MΩ min. at DC 500V.

Contact Resistance: 20mΩ max. at DC 100mA.

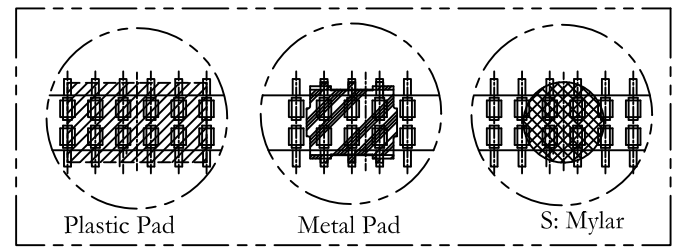
Operating Temperature: -65°C~+125°C .

***RoHS Compliant**

Insertion Depth: 2.20mm to 4.35mm.

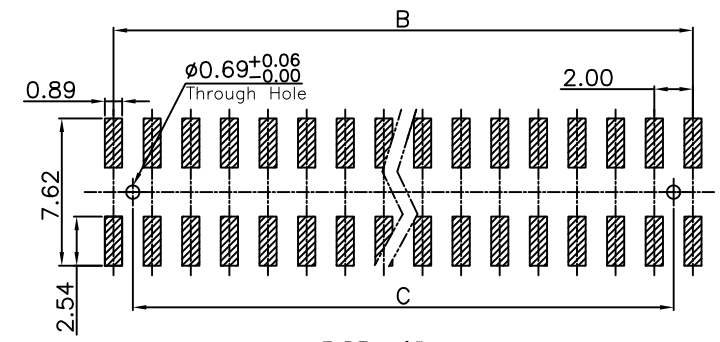
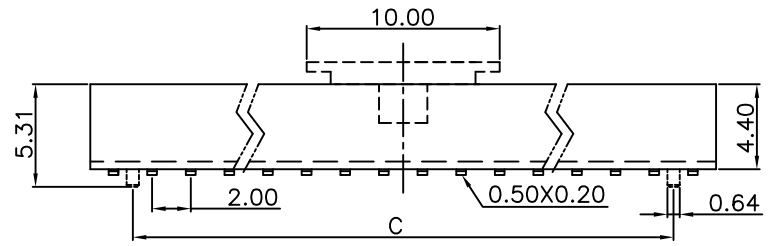
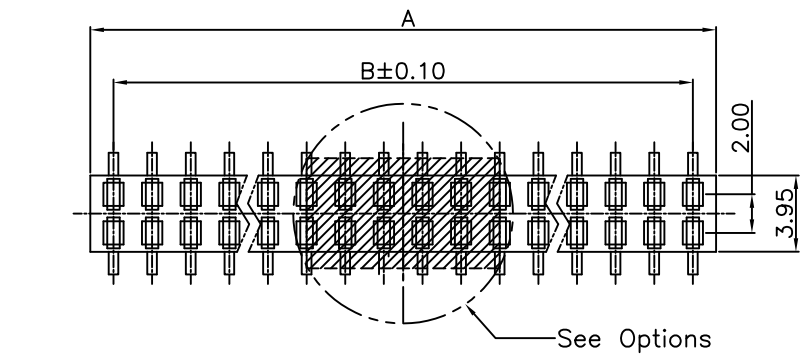
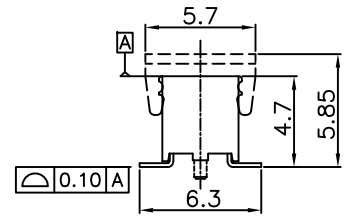
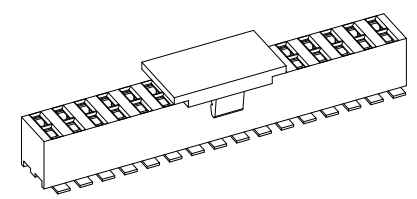
Bottom Entry Insertion Depth: 4.40mm min.
(Excluding PCB Thickness).

Options

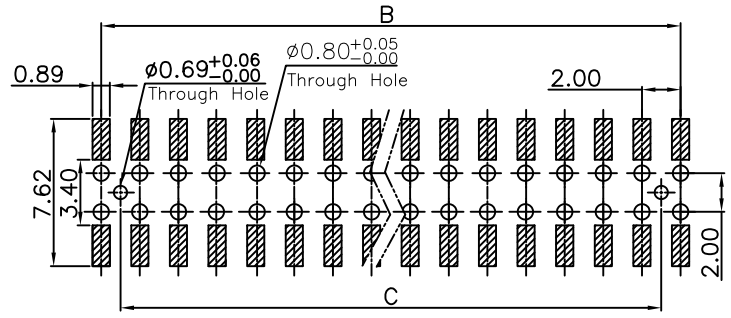


Series: 2143- 2 X xx G xx D X T -x
 Double Row: 2
 No. of Pin Per Row: X
 C: Selective Gold Plated
 G: Gold Plated
 T: Tin Plated
 00: G/F
 10: 10μ
 15: 15μ
 30: 30μ
 Blank: W/O Pad
 P: Plastic Pad
 M: Metal Pad
 S: Mylar
 T: Tape & Reel Package
 U: Tube Package
 P: Post
 N: W/O Post
 D: SMD Type

Position	
Dimension	4 Thru 80
A	2.0 X No. of Positions/2
B	2.0 X No. of Positions/2 -2.0
C	2.0 X No. of Positions/2 -4.0



P.C. Board Layout
(Tolerance: ±0.05mm)



P.C. Board Layout For Bottom Entry Optional
(Tolerance: ±0.05mm)

Tolerances	Dwg. No.	2143D02006	Title:	
x = ±0.5	Projection		2143 Series	
.x = ±0.25	Unit	mm	Scale	1:1
.xx = ±0.15	Drawn By	MXM 08/14'17	P.C.B. Socket	
			2.0mmX2.0mm	

OUPIN			
OUPIN ELECTRONIC(KUNSHAN) CO., LTD.			
P/N: 2143-2XxxGxxDXT-x			
SHEET	1/1	Ver.No.	R8