

REV.	SPECIFICATION	ECN NO.	APPD.
R6		ECN220849	

### Material and Plating:

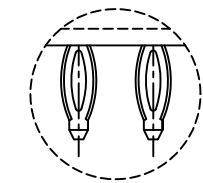
Housing: PBT,UL94V-0,Black  
 Contacts: Brass  
 Gold plated or 80u"min Tin Plated on contact area and  
 Gold Flash or 80u"min Tin Plated on press fit or solder tail  
 over Nickel 50u"Min.

### Electrical Characteristics:

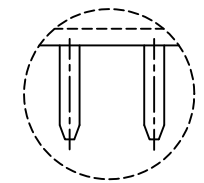
Current Rating: 2 AMP.  
 Dielectric Withstanding Voltage: AC 1000V for 1 minute.  
 Insulator Resistance: 1000MΩ min. at DC 500V.  
 Contact Resistance: 20mΩ max. at DC 100mA.  
 Operating Temperature: -55°C~+105°C .

### \*RoHS Compliant

Insertion Depth: 2.55mm to 6.20mm.

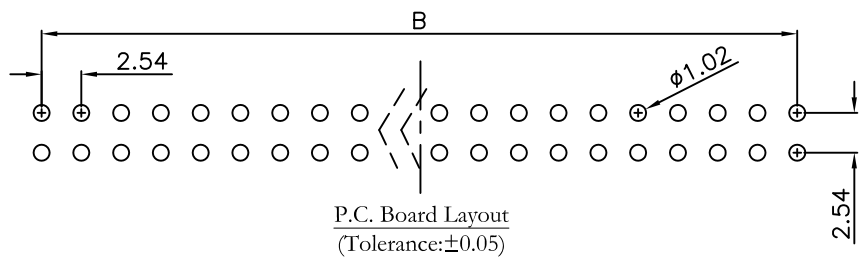
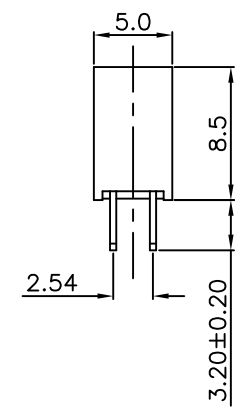
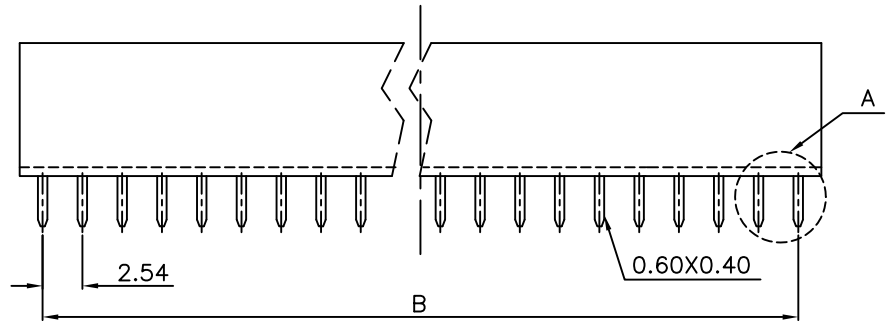
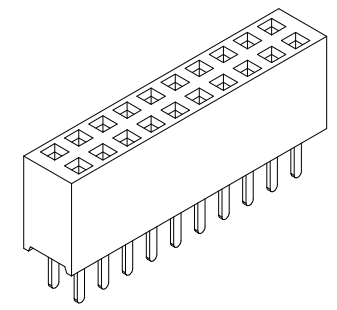
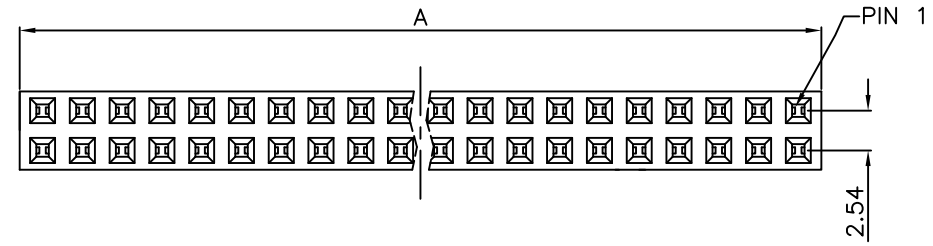


Press Fit Type



Dip Type

Detail A  
 Scale:2 : 1



Series: 2044- 2 X xx G xx S P A  
 Double Row  
 No. of Pin Per Row  
 G: Gold Plated  
 T: Tin Plated  
 MT: Matte Tin Plated  
 A: Tray Package  
 B: Bulk Package  
 P: Press Fit Type  
 Blank: Dip Type  
 S: Straight  
 00: G/F  
 10: 10μ"  
 15: 15μ"  
 30: 30μ"

Position	4 Thru 80
Dimension	
A	2.54 X No. of Position /2+0.4
B	2.54 X No. of Position /2-2.54

Tolerances	Dwg. No.	2044-D0000-003	Title:
x = ±0.5	Projection		2044 Series
.x = ±0.25	Unit	mm	P.C.B. Socket
.xx = ±0.15	Scale	1:1	2.54mmX2.54mm(0.100"X0.100")
	Drawn By	ZY 08/23'22	

<b>OUPIN</b>			
OUPIN ELECTRONIC(KUNSHAN) CO., LTD.			
P/N: 2044-2XxxGxxSPA			
SHEET	1/1	Ver. No.	R6