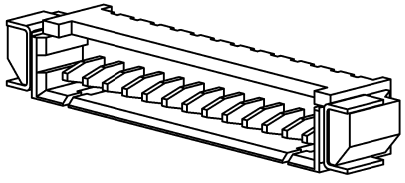
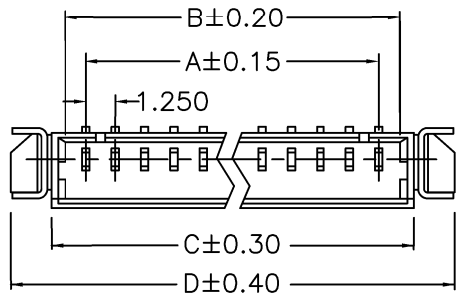


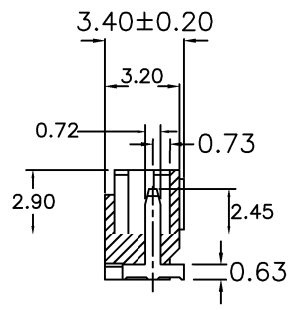
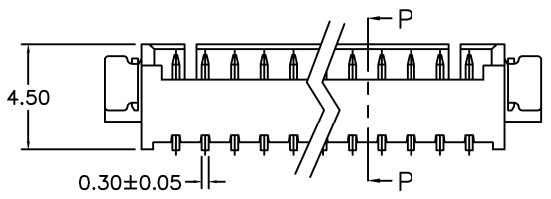
REV.	SPECIFICATION	ECN NO.	APPD.



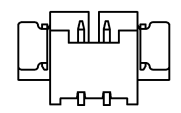
Material:
Housing: PA6T,UL94V-0,Natural.
Contacts: Phosphor Bronze,100u" Matte Tin Plated over Nickel 50u".
Solder Pad: Brass,100u" Matte Tin Plated over Nickel 50u".

Electrical Characteristics:
Current Rating: 1 AMP.
Voltage Rating: AC 125V.
Dielectric Withstanding Voltage: AC 250V.
Insulator Resistance: 100MΩ min.
Contact Resistance: 20mΩ max.
Operating Temperature: -40°C~+85°C.

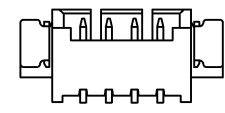
***RoHS Compliant**



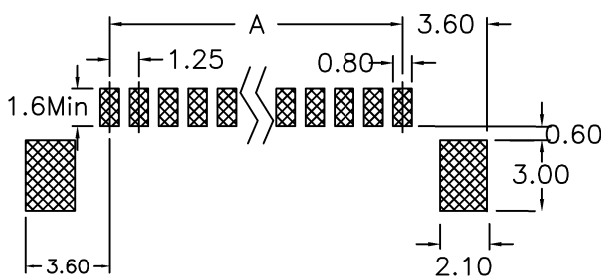
Side Entry
Section P-P'



02~03P



04~15P



P.C. Board Layout

4573-xx MT D1 T
Series No. of Pin Count MT: Matte Tin Plated D1: SMD Side Entry (Right Angle) U: Tube Package T: Tape & Reel Package

Position	2 Thru 15
Dimension	
A	(No. of Positions X 1.25)-1.25
B	(No. of Positions X 1.25)+0.55
C	(No. of Positions X 1.25)+1.75
D	(No. of Positions X 1.25)+5.15

Tolerances	Dwg No.	4573D01002
.x = ±0.35	Projection	⊕ ⊖
.xx = ±0.25	Unit	mm
.xxx = ±0.15	Scale	1:1
	Drawn By	Martin 04/21'21

Title: 4573 Series
1.25mm wire to Board
SMD side Entry Type

OUPIIN
OUPIIN ELECTRONIC(KUNSHAN) CO., LTD.
P/N: 4573-xxMTD1T

SHEET	1/1	Ver.No.	B3
-------	-----	---------	----

0704