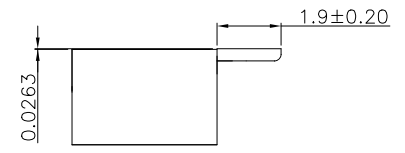
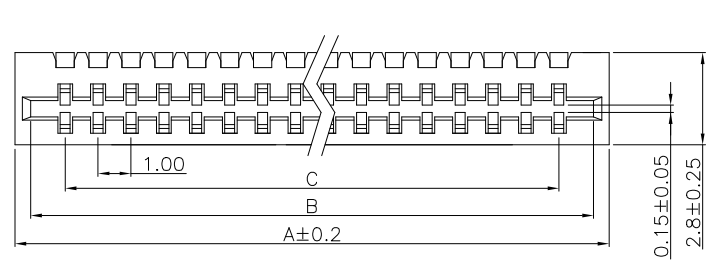
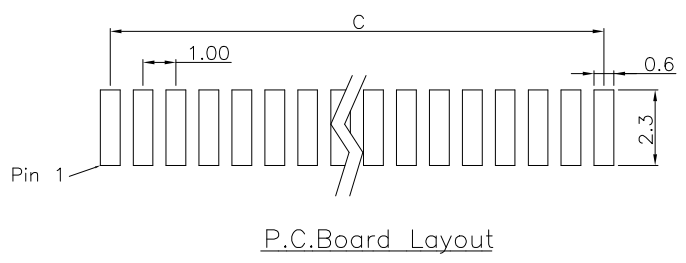
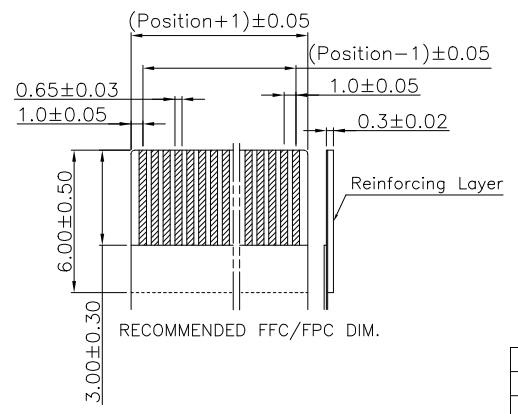
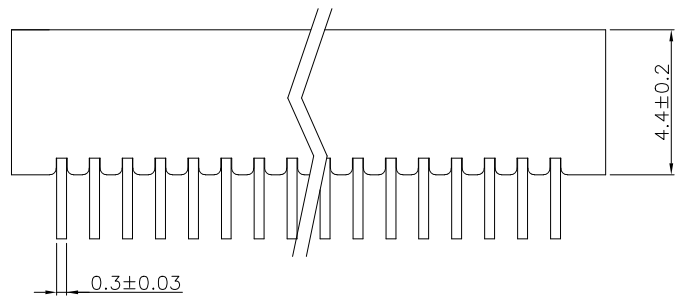


REV.	SPECIFICATION	ECN NO.	APPD.



Material:
Housing: LCP, UL94V-0, Black.
Contacts: Phosphor Bronze, Tin Plated over Nickel.
Electrical Characteristics:
Current Rating: 1 AMP.
Dielectric Withstanding Voltage: AC 250V.
Insulation Resistance: 500MΩ min.
Contact Resistance: 30mΩ max.
Operating Temperature: -45°C~+85°C.
***RoHS Compliant**



Series: 2432-C xx T D x
 Positions: xx
 T: Tin Plated
 D: SMD Type
 U: Tube Package
 T: Tape & Reel Package

*** Available Position							
Positions	A	B	C	Positions	A	B	C
* 04	6.00	5.10	3.00	* 18	20.00	19.10	17.00
* 05	7.00	6.10	4.00	* 19	21.00	20.10	18.00
* 06	8.00	7.10	5.00	* 20	22.00	21.10	19.00
* 07	9.00	8.10	6.00	* 21	23.00	22.10	20.00
* 08	10.00	9.10	7.00	* 22	24.00	23.10	21.00
* 09	11.00	10.10	8.00	* 23	25.00	24.10	22.00
* 10	12.00	11.10	9.00	* 24	26.00	25.10	23.00
* 11	13.00	12.10	10.00	* 25	27.00	26.10	24.00
* 12	14.00	13.10	11.00	* 26	28.00	27.10	25.00
* 13	15.00	14.10	12.00	* 27	29.00	28.10	26.00
* 14	16.00	15.10	13.00	* 28	30.00	29.10	27.00
* 15	17.00	16.10	14.00	* 29	31.00	30.10	28.00
* 16	18.00	17.10	15.00	* 30	32.50	31.10	29.00
* 17	19.00	18.10	16.00				

Tolerances	Dwg. No.	S0220200828-02		Title: 2432-C Series		 OUPIIN ELECTRONIC(KUNSHAN) CO., LTD. P/N: 2432-CxxTDx	
.x = ±0.30	Projection			FFC/FPC Connector			
.xx = ±0.20	Unit	mm	Scale	1.00mm Non ZIF		SHEET	1/1
.xxx = ±0.10	Drawn By	Martin 03/07'24		SMD Type		Ver.No.	X3