

REV.	SPECIFICATION	ECN NO.	APPD.

Material:
 Contacts: Copper Alloy.
 Terminal Plating: Tin Plated.
 Recommend Wire: T1:18AWG TO 24AWG,
 T2:22AWG TO 28AWG.
 T3:16AWG.

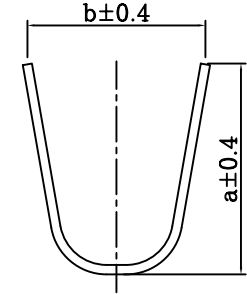
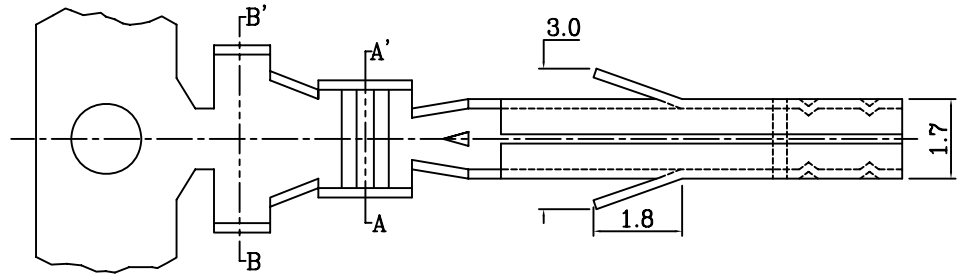
Electrical Characteristics:

Current Rating:

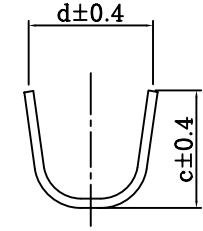
Position	12~24	7~10	4~6	2~3
AWG#16	6A	7A	8A	9A
AWG#18	6A	7A	8A	9A
AWG#20	5A	5A	6A	7A
AWG#22	4A	4A	4A	5A
AWG#24	3A	3A	3A	4A
AWG#26	2A	2A	2A	3A
AWG#28	1A	1A	1A	2A

Dielectric Withstanding Voltage: AC 1500V For 1 minute.
 Contact Resistance: 10MΩ max. at AC 100V.
 Crimp Resistance: 5mΩ max.
 Operating Temperature: -40°C~+105°C.

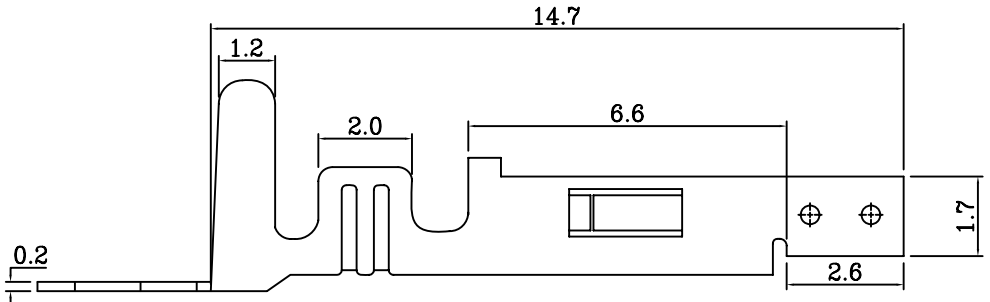
***RoHS Compliant**



Section B-B'



Section A-A'



4973- PIN- F- 5K- Tx
 Series F: Female 5K Pins Per Reel T1: Wire Range 18-24AWG
 T2: Wire Range 22-28AWG
 T3: Wire Range 16AWG

Wire Gauge	Type	Dimension			
		a	b	c	d
18~24AWG	T1	4.5	3.6	2.3	1.9
22~28AWG	T2	2.3	2.3	1.65	1.8
16AWG	T3	4.5	3.6	2.8	2.4

Tolerances	Dwg. No.	4973P02001	Title:
x = ±0.5	Projection		4973 Series Female Terminal
.x = ±0.4	Unit mm	Scale 1:1	
.xx = ±0.25	Drawn By	ZJJ 10/06'11	

⑦32

OUPIN
 OUPIN ELECTRONIC(KUNSHAN) CO., LTD.
 P/N: 4973-PIN-F-5K-Tx
 SHEET 1/1 Ver.No. B3