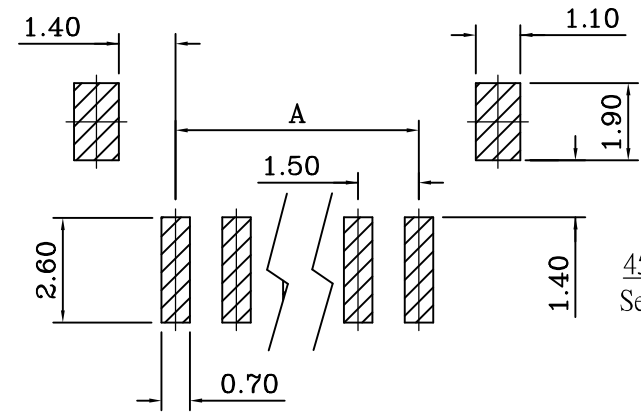
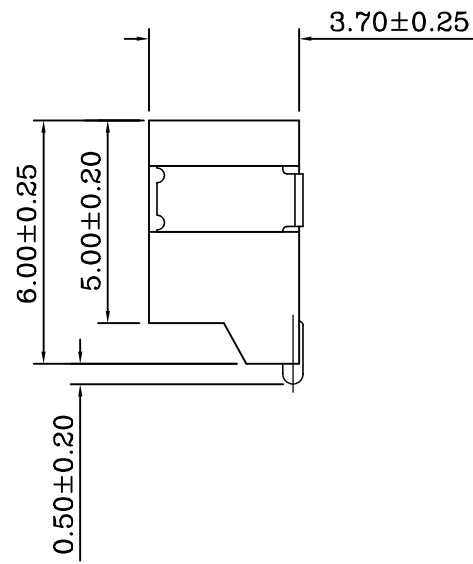
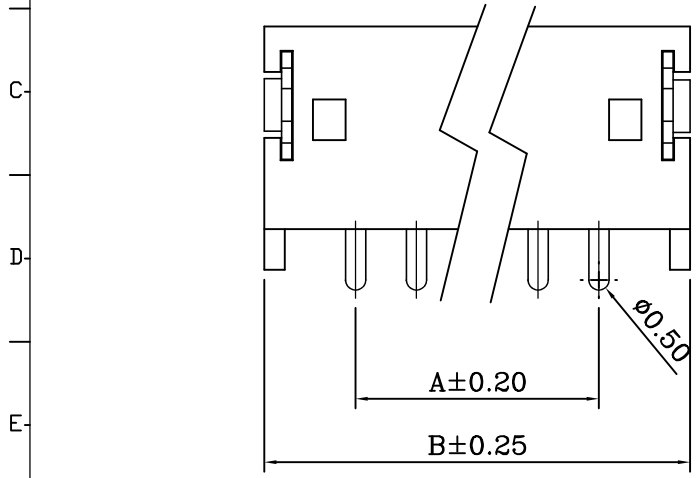
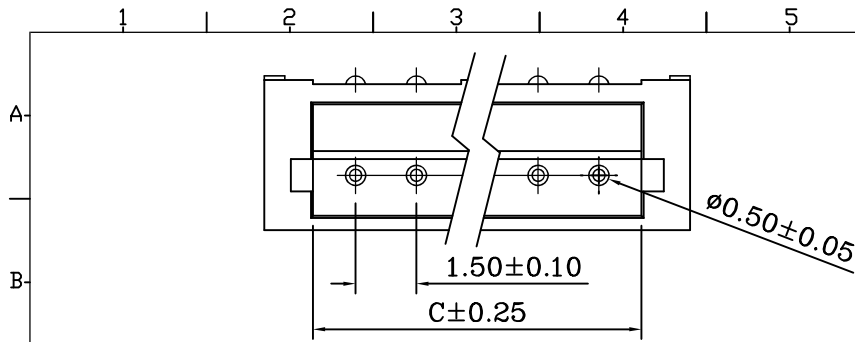


REV.	SPECIFICATION	ECN NO.	APPD.



P.C. Board Layout

4572-xx T D1 U
 Series No.of Position T: Tin Plated D1: SMD Side Entry (Right Angle) U: Tape&Reel Package U: Tube Package

Material:

Housing: PA9T, UL94V-0, Natural.
 Contacts: Brass, 120u" Tin Plated over Nickel 50u".
 Solder Pad: Brass, 120u" Tin Plated over Nickel 50u".

Electrical Characteristics:

Current Rating: 1 AMP.
 Dielectric Withstanding Voltage: 500V.
 Insulator Resistance: 500MΩ min.
 Contact Resistance: 20mΩ max.
 Operating Temperature: -25°C~+85°C.

***RoHS Compliant**

Position	Dimension		
	A	B	C
2	1.50	6.00	3.60
3	3.00	7.50	5.10
4	4.50	9.00	6.60
5	6.00	10.50	8.10
6	7.50	12.00	9.60
7	9.00	13.50	11.10
8	10.50	15.00	12.60
9	12.00	16.50	14.10
10	13.50	18.00	15.60
11	15.00	19.50	17.10
12	16.50	21.00	18.60
13	18.00	22.50	20.10

Tolerances	Drawn No.	4572D01004	
.x = ±0.35	Projection	⊕ ⊖	
.xx = ±0.25	Unit	mm	Scale 1:1
.xxx = ±0.15	Drawn By	Jerry 11/11'19	

Title: 4572 Series
 1.5mm Wire to Board
 Right Angle Side Entry Type
 704

OUPIN
 OUPIN ELECTRONIC(KUNSHAN) CO., LTD.
 P/N: 4572-xxTD1U
 SHEET 1/1 Ver.No. A4